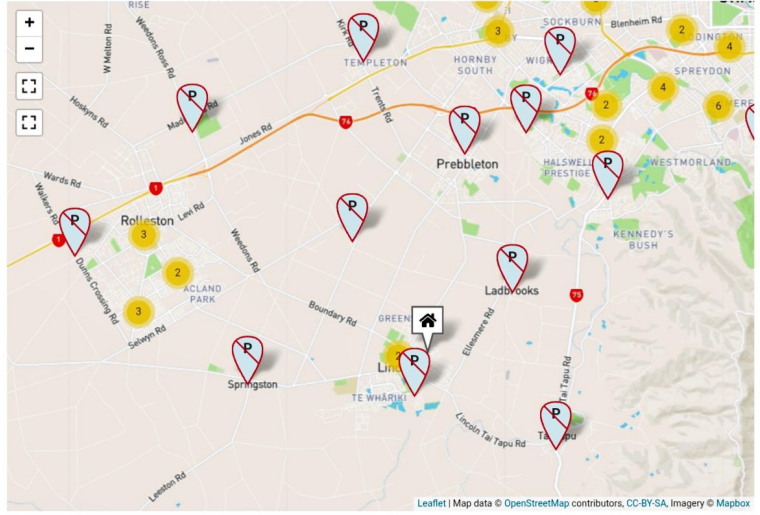


Search by an address

Search by a school name

Nearby schools:

- Lincoln Primary School**
 Full Primary School (Year 1-8)
INSIDE ZONE
- Lincoln High School**
 Secondary School (Year 9-15)
INSIDE ZONE
- Ararira Springs Primary- Te Puna o Ararira**
 Full Primary School (Year 1-8)
OUTSIDE ZONE
- Ladbrooks School**



Key

Primary	Primary & Secondary (Composite)	Secondary	Specialist	Teen Parent Unit	Out of zone	Out of zone Primary & Secondary	Proposed School

Estimate Your Payments

New Vehicle Used Vehicle

Select vehicle:

RAV4

Select option:

RAV4 Limited Hybrid - Electronic

RAV4 Limited Hybrid \$63,990^{TDP}

Monthly payment

\$884.98

Number of payments

40

Amount financed

\$28,990

Total amount payable \$35,399.20

Floating rate of interest 10.5% p.a.

This is an indicative rate. Find out what your [personalised rate could be here](#).



Lease Finance/Purchase

Interest type:

Floating

Deposit:

\$ 35000

Repayments:

Monthly

Calculate payments

Reset >

Contact your store

Email your finance details

[Learn about our finance products](#)

Disclaimer:

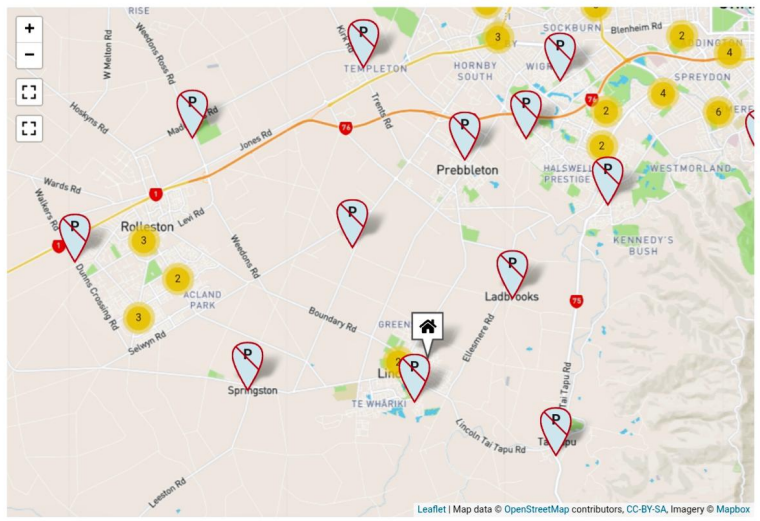
This calculator can be used to provide an indicative fixed interest rate and payment for a Toyota Financial Services Credit Contract. It does not represent an offer of finance for a specific amount financed, term or interest rate. All facilities are subject to Toyota Financial Services' normal lending criteria. An establishment fee of \$500.00 and a PPSR fee of \$9.20 are included. Interest rates are subject to change. Repayment amounts displayed are inclusive of GST.

Search by an address

Search by a school name

Nearby schools:

- Lincoln Primary School**
 Full Primary School (Year 1-8)
INSIDE ZONE
- Lincoln High School**
 Secondary School (Year 9-15)
INSIDE ZONE
- Ararira Springs Primary- Te Puna o Ararira**
 Full Primary School (Year 1-8)
OUTSIDE ZONE
- Ladbrooks School**



Key

Primary	Primary & Secondary (Composite)	Secondary	Specialist	Teen Parent Unit	Out of zone	Out of zone Primary & Secondary	Proposed School