



**RECORD OF TITLE  
UNDER LAND TRANSFER ACT 2017  
FREEHOLD**

**Guaranteed Search Copy issued under Section 60 of the Land  
Transfer Act 2017**



  
R. W. Muir  
Registrar-General  
of Land

**Identifier** **NA139D/293**  
**Land Registration District** **North Auckland**  
**Date Issued** 16 April 2003

**Prior References**

NA2D/249                      NA2D/459

---

**Estate**                      Fee Simple  
**Area**                      4.4220 hectares more or less  
**Legal Description**      Lot 4 Deposited Plan 211785

**Registered Owners**

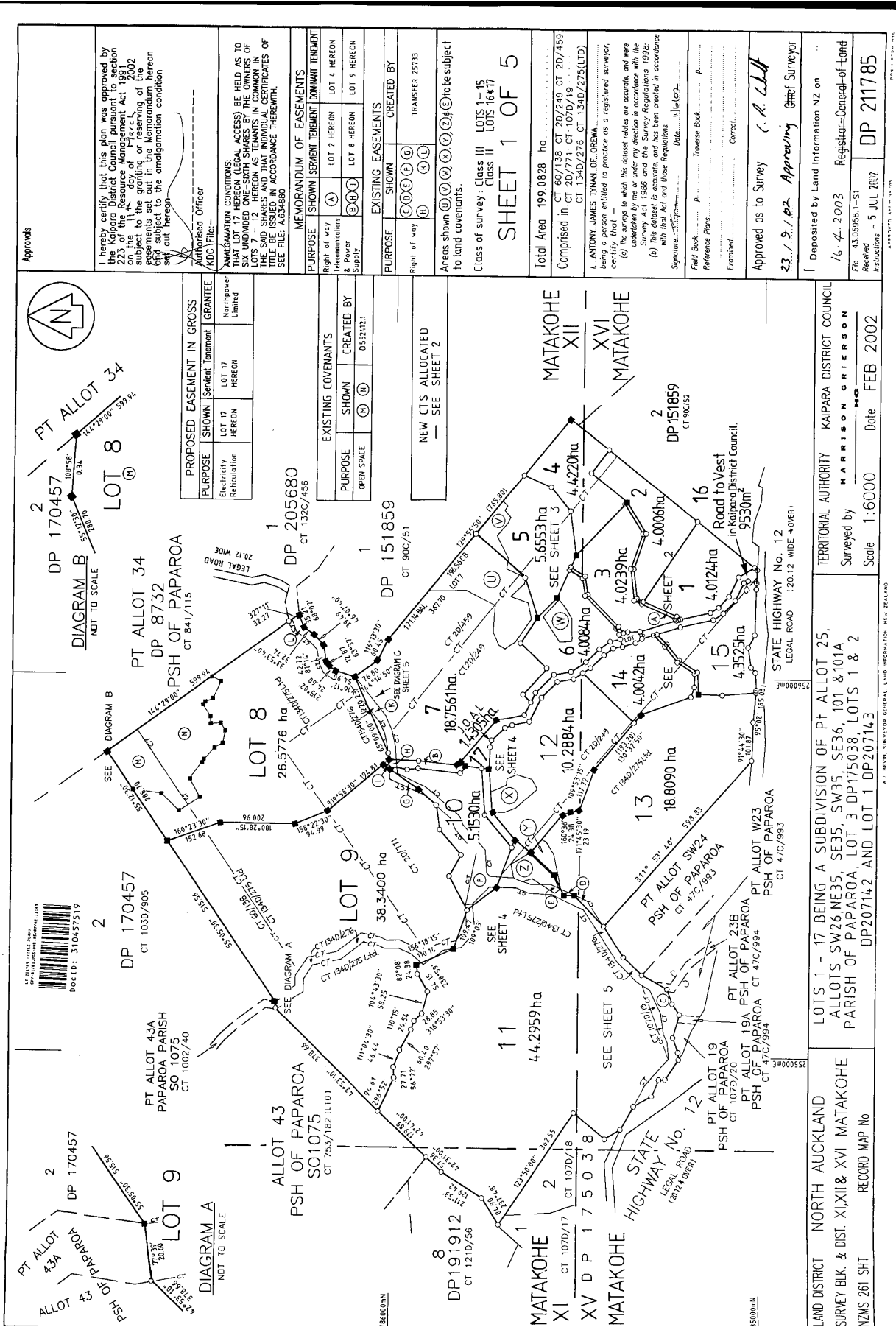
Naazneen Nisha

---

**Interests**

Appurtenant hereto is a right of way and rights to convey electricity, telecommunications and computer media created by Easement Instrument 5593163.1 - 20.5.2003 at 9:00 am

The easements created by Easement Instrument 5593163.1 are subject to Section 243 (a) Resource Management Act 1991



Approvals

I hereby certify that this plan was approved by the Kaipara District Council pursuant to section 223 of the Resource Management Act 1990 and that the easements set out in the Memorandum herein are subject to the amalgamation condition set out hereon.

Authorised Officer  
KOC File: \_\_\_\_\_

AMALGAMATION CONDITIONS: THIS PLAN SHALL BE HELD AS TO SIX UNDIVIDED ONE-SIXTH SHARES BY THE OWNERS OF LOTS 7 - 12 HEREON AS TENANTS IN COMMON IN THE SAID SHARES AND THAT INDIVIDUAL CERTIFICATES OF TITLE SHALL BE GRANTED IN ACCORDANCE THEREWITH. SEE FILE: NA346480.

MEMORANDUM OF EASEMENTS

PURPOSE	SHOWN	SERVIENT TENEMENT	DOMINANT TENEMENT
Right of way	(A)	LOT 2 HERON	LOT 4 HERON
Electricity	(B)	LOT 8 HERON	LOT 9 HERON
Water	(C)	LOT 8 HERON	LOT 9 HERON
Supply	(D)	LOT 8 HERON	LOT 9 HERON

EXISTING EASEMENTS

PURPOSE	SHOWN	CREATED BY
Right of way	(E)	TRANSFER 25733
Electricity	(F)	
Water	(G)	
Supply	(H)	

Areas shown (I) (J) (K) (L) (M) (N) (O) (P) (Q) (R) (S) (T) (U) (V) (W) (X) (Y) (Z) to be subject to land covenants.

Class of survey: Class III LOTS 1-15  
Class II LOTS 16-17

SHEET 1 OF 5

Total Area 199.0828 ha

Comprised in CT 60/138 CT 20/249 CT 20/459  
CT 20/771 CT 1070/19  
CT 1340/278 CT 1340/275(LTD)

L. ANTONY, JAMES TYMAN, OF. OREW. being a person entitled to practice as a registered surveyor, certify that -

(a) the survey to which this dossier relates is accurate, and were made in accordance with the provisions of section 196 of the Survey Act 1986 and the provisions of the Regulations made thereunder;

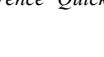
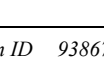
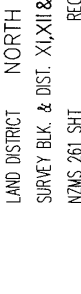
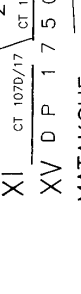
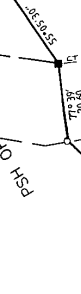
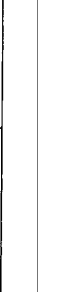
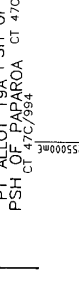
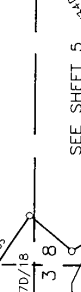
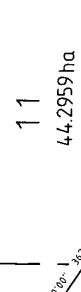
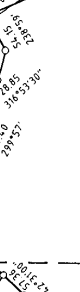
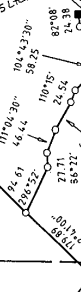
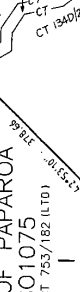
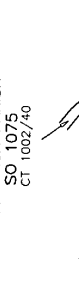
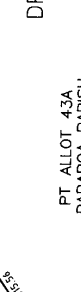
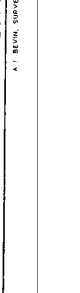
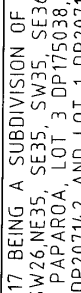
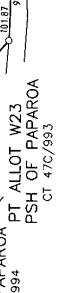
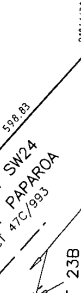
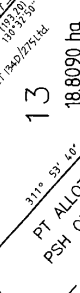
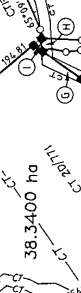
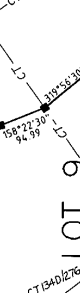
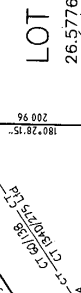
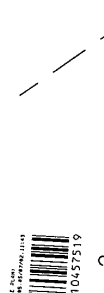
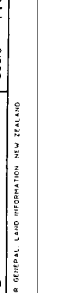
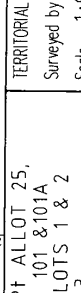
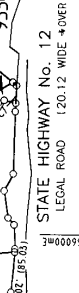
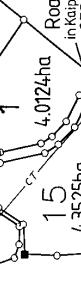
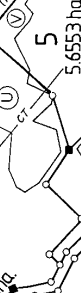
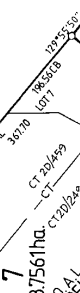
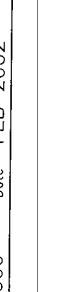
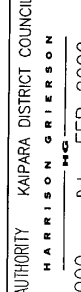
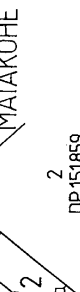
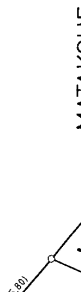
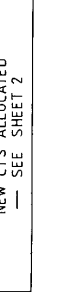
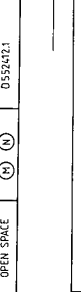
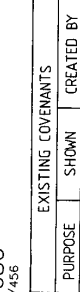
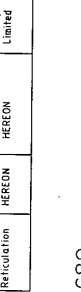
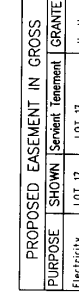
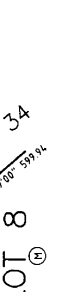
(b) the dossier is accurate, and has been created in accordance with that Act and those Regulations.

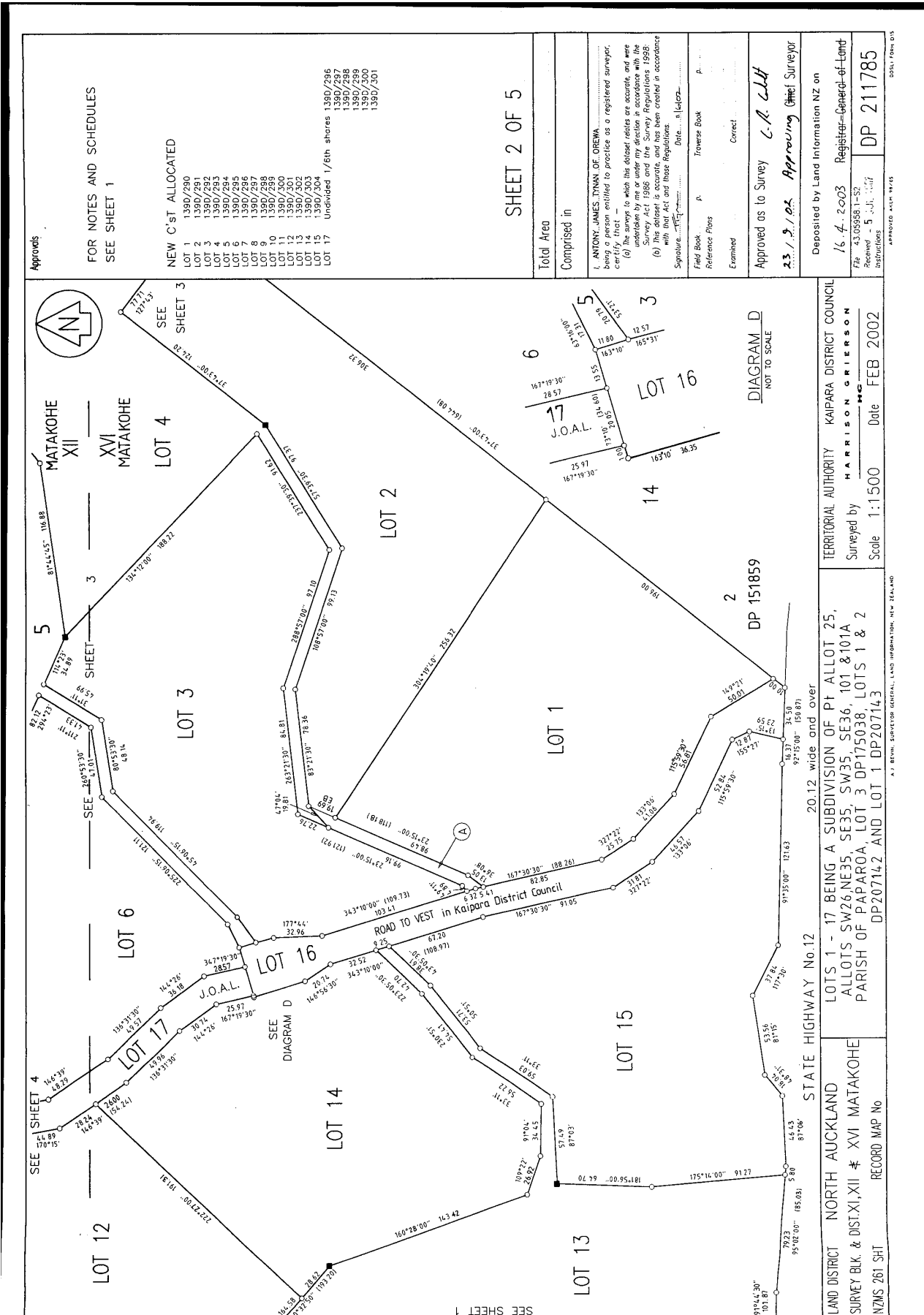
Signature: \_\_\_\_\_ Date: \_\_\_\_\_

Field Book: \_\_\_\_\_ Traverse Book: \_\_\_\_\_  
Reference Plans: \_\_\_\_\_  
Examined: \_\_\_\_\_ Correct: \_\_\_\_\_

Approved as to Survey by: \_\_\_\_\_  
23/9/02 Approving Chief Surveyor

Deposited by Land Information NZ on 16/4/2003 Registered General Land File: 43.05568-1-51 Received Instructions: 5 JUL 2002 DP 211785





FOR NOTES AND SCHEDULES  
SEE SHEET 1

NEW C'st ALLOCATED

- LOT 1 1390/290
- LOT 2 1390/291
- LOT 3 1390/292
- LOT 4 1390/293
- LOT 5 1390/294
- LOT 6 1390/295
- LOT 7 1390/296
- LOT 8 1390/297
- LOT 9 1390/298
- LOT 10 1390/299
- LOT 11 1390/300
- LOT 12 1390/301
- LOT 13 1390/302
- LOT 14 1390/303
- LOT 15 1390/304
- LOT 16 1390/305
- LOT 17 Undivided 1/6th shares 1390/296  
1390/297  
1390/298  
1390/299  
1390/300  
1390/301

SHEET 2 OF 5

Total Area	
Comprised in	
I. ANTONY JAMES DYMAN, OF DREWA has been entitled to practice as a registered surveyor, certify that: (a) the surveys to which his docket relates are accurate, and were undertaken by me or under my direction in accordance with the Survey Act 1986 and the Survey Regulations 1998; (b) the docket is accurate, and has been created in accordance with that Act and those Regulations. Signature: <i>[Signature]</i> Date: 16/02/03	
Field Book	P. Traverse Book
Reference Plans	
Examined	Correct
Approved as to Survey	C. A. C. L. L. L.
	23/02/03 Approving Chief Surveyor

Deposited by Land Information NZ on  
16.4.2003 Register-General of Land  
File 43 05958 1-52  
Received - 5 July 2003  
Instructions DP 211785  
APPROVED MAIN PLAN



DIAGRAM D  
NOT TO SCALE

DP 151859

STATE HIGHWAY No. 12  
20.12 wide and over

LAND DISTRICT NORTH AUCKLAND  
SURVEY BLK. & DIST. XI, XII & XVI MATAKOHE  
NZMS 261 SHIT RECORD MAP No

TERRITORIAL AUTHORITY KAIPARA DISTRICT COUNCIL  
Surveyed by HARRISON GRIERSON  
Scale 1:1500 Date FEB 2002

LOTS 1 - 17 BEING A SUBDIVISION OF PT ALLOT 25,  
ALLOTS SW26 NE35, SE35, SW35, SE36, 101 & 101A  
PARISH OF PAPAROA, LOT 3 DP175038, LOTS 1 & 2  
DP207142 AND LOT 1 DP207143

SEE SHEET 1

SEE SHEET 3

SEE SHEET 4

SEE SHEET 5

SEE SHEET 6

SEE SHEET 7

SEE SHEET 8

SEE SHEET 9

SEE SHEET 10

SEE SHEET 11

SEE SHEET 12

SEE SHEET 13

SEE SHEET 14

SEE SHEET 15

SEE SHEET 16

SEE SHEET 17

SEE SHEET 18

SEE SHEET 19

SEE SHEET 20

SEE SHEET 21

SEE SHEET 22

SEE SHEET 23

SEE SHEET 24

SEE SHEET 25

SEE SHEET 26

SEE SHEET 27

SEE SHEET 28

SEE SHEET 29

SEE SHEET 30

SEE SHEET 31

SEE SHEET 32

SEE SHEET 33

SEE SHEET 34

SEE SHEET 35

SEE SHEET 36

SEE SHEET 37

SEE SHEET 38

SEE SHEET 39

SEE SHEET 40

SEE SHEET 41

SEE SHEET 42

SEE SHEET 43

SEE SHEET 44

SEE SHEET 45

SEE SHEET 46

SEE SHEET 47

SEE SHEET 48

SEE SHEET 49

SEE SHEET 50

SEE SHEET 51

SEE SHEET 52

SEE SHEET 53

SEE SHEET 54

SEE SHEET 55

SEE SHEET 56

SEE SHEET 57

SEE SHEET 58

SEE SHEET 59

SEE SHEET 60

SEE SHEET 61

SEE SHEET 62

SEE SHEET 63

SEE SHEET 64

SEE SHEET 65

SEE SHEET 66

SEE SHEET 67

SEE SHEET 68

SEE SHEET 69

SEE SHEET 70

SEE SHEET 71

SEE SHEET 72

SEE SHEET 73

SEE SHEET 74

SEE SHEET 75

SEE SHEET 76

SEE SHEET 77

SEE SHEET 78

SEE SHEET 79

SEE SHEET 80

SEE SHEET 81

SEE SHEET 82

SEE SHEET 83

SEE SHEET 84

SEE SHEET 85

SEE SHEET 86

SEE SHEET 87

SEE SHEET 88

SEE SHEET 89

SEE SHEET 90

SEE SHEET 91

SEE SHEET 92

SEE SHEET 93

SEE SHEET 94

SEE SHEET 95

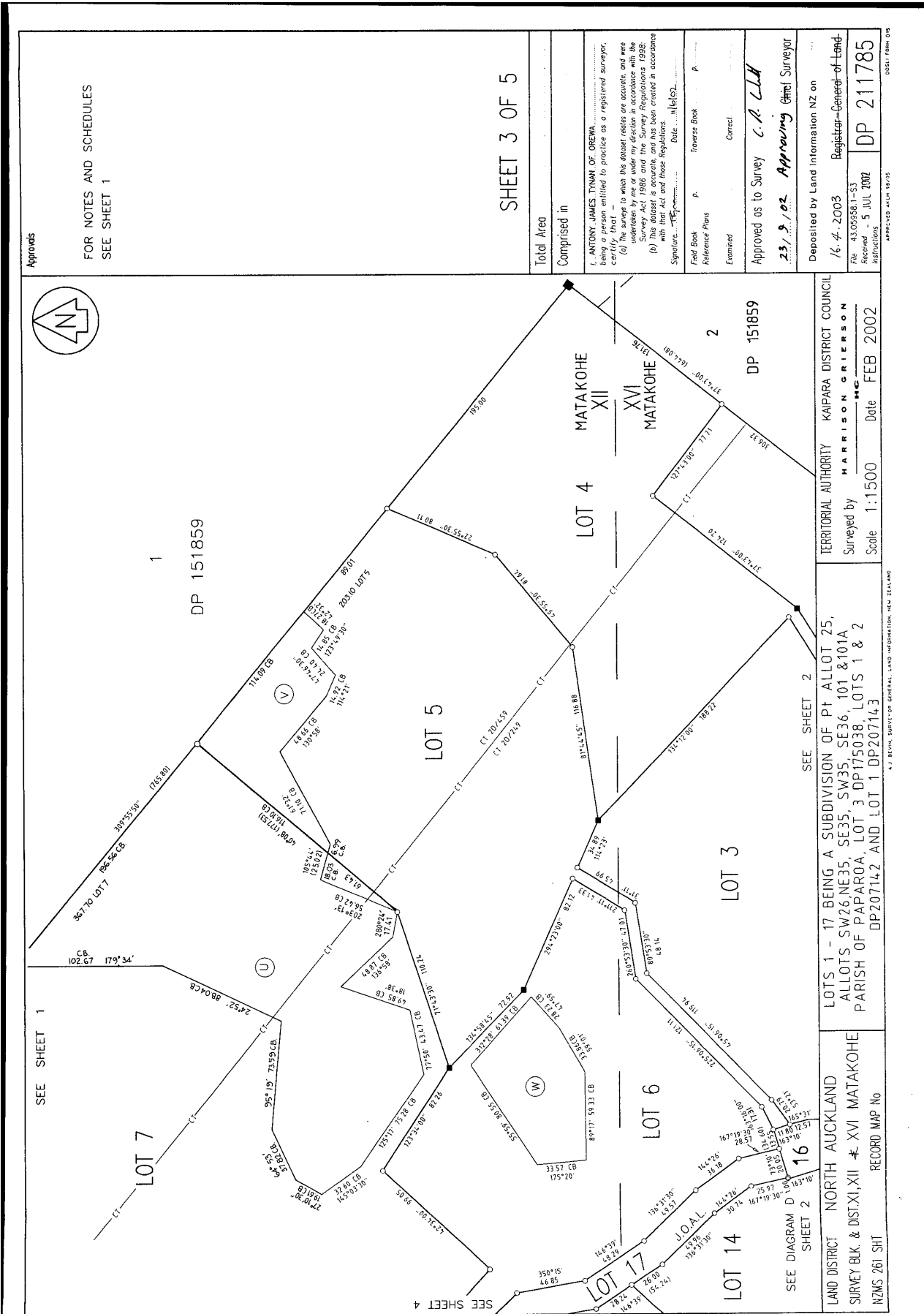
SEE SHEET 96

SEE SHEET 97

SEE SHEET 98

SEE SHEET 99

SEE SHEET 100



Approvals

FOR NOTES AND SCHEDULES  
SEE SHEET 1

SHEET 3 OF 5

Total Area	
Comprised in	
I, ANTHONY JAMES TYMAN OF OREWA, being a person entitled to practice as a registered surveyor, certify that -	
(a) The surveys in which this dossier relates are accurate, and were undertaken by me or under my direction in accordance with the Survey Act 1986 and the Survey Regulations 1986;	
(b) The surveys in which this dossier relates have been created in accordance with that Act and those Regulations;	
Signature	Date: 11/06/02
Field Book	Transverse Book P. A.
Reference Plans	Correct
Examined	
Approved as to Survey	C. A. L. L. H.
	23/9/02 Approving Surveyor
Deposited by Land Information NZ on	
	16/4/2003 Registrar-General of Land
File	43.059581-53
Received	5 JUL 2002
Instructions	DP 211785

SEE SHEET 1

SEE SHEET 2

SEE SHEET 4

SEE DIAGRAM D 16 SHEET 2

LAND DISTRICT NORTH AUCKLAND

SURVEY BLK. & DIST. XI, XII - XVI MATAKOHE

NZMS 261 SH1

RECORD MAP No

LOTS 1 - 17 BEING A SUBDIVISION OF PT ALLOT 25, ALLOTS SW26, NE35, SE35, SW35, SE36, 101 & 101A PARISH OF PAPAROA, LOT 3 DP175038, LOTS 1 & 2 DP207142 AND LOT 1 DP207143

TERRITORIAL AUTHORITY KAIPARA DISTRICT COUNCIL

Surveyed by HARRISON GRIERSON

Scale 1:1500 Date FEB 2002

05/17 FORM 018

APPROVED 4/11/95

