



WHANGANUI DISTRICT COUNCIL

Te Kaunihera a Rohe o Whanganui

Disclaimer:
Digital map data sourced from Land Information New Zealand CROWN COPYRIGHT RESERVED.
The information displayed in the GIS has been taken from Whanganui District Council's databases and maps.
It is made available in good faith but its accuracy or completeness is not guaranteed. If the information is relied on in support of a resource consent it should be verified independently.

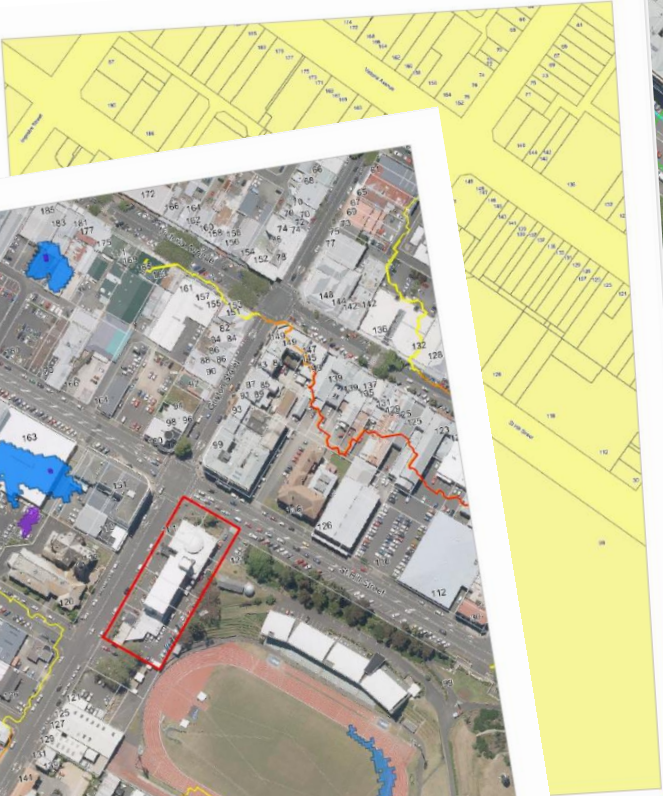
Tuesday, 19 June 2018

Land Data

Land Information

Data sourced from LINZ

Parcel ID	Appellation	Area	Land No
3777024	Part Section 213 TN OF Whanganui	433.0000	6589
3803555	Section 216 TN OF Whanganui	1012.0000	13518
3873652	Section 214 TN OF Whanganui	1012.0000	12121
4022476	Part Section 213 TN OF Whanganui	578.0000	
7376772	Part Section 213 TN OF Whanganui		
7376772	Part Section 213 TN OF Whanganui		



Utilities Map

Quefaction



Overland Flow Paths Map

Disclaimer:
Digital map data sourced from Land Information New Zealand CROWN COPYRIGHT RESERVED.
The information displayed in the GIS has been taken from Whanganui District Council's databases and maps.
It is made available in good faith but its accuracy or completeness is not guaranteed. If the information is relied on in support of a resource consent it should be verified independently.

Scale 1:2000
Tuesday, 19 June 2018

- Depression Areas > 300mm
- Depression Areas > 200mm
- Overland flow path
- Overland flow path with flow

Property Maps



Disclaimers

- This information has been computer generated from Whanganui District Council records and has not been reviewed by Whanganui District Council. It is provided for information only and while Whanganui District Council takes all due care, it does not guarantee the accuracy or completeness of this information.
This is not a Land Information Memorandum or property file and cannot be relied upon as such. A LIM gives you a wider range of information, and several subject matter experts will check the content and make comments.
- The use of this information is subject to:
 - [Copyright](#)
 - [Privacy Statement](#)
 - [Terms of Trade](#)
- This information has been produced at the issued date and is valid only as a statement of Council's information at that date.
- A valuation assessment can consist of multiple land parcels. The information in this report covers the entire valuation assessment. If you are only interested in part of the land, you must wait until the subdivision of the land is complete before we can provide information that applies only to the newly subdivided valuation assessment.
- Council records may not show illegal or unauthorised building works on the property.

Further Information

- A full Land Information Memorandum (LIM) can be requested online at...
www.whanganui.govt.nz/Property/Property-Information/Apply-for-a-Land-Information-Memorandum-LIM
- We have a file of information on almost every property in the district. You can request a digital copy of the file, or come in and view it at our office located at 101 Guyton Street, Whanganui. Our website has more information about viewing property files at...
www.whanganui.govt.nz/Property/Property-Information/Request-a-property-file
- Additional maps and geospatial data are available online at...
maps.whanganui.govt.nz
- Rules defined in the Whanganui District Plan may also apply to this property. The District Plan is available online at...
eplan.whanganui.govt.nz

Customer Services

101 Guyton Street
Monday-Friday 8.30am-5pm
yourcouncil@whanganui.govt.nz
06 349 0001

Postal address

Whanganui District Council
PO Box 637
Whanganui 4541



Disclaimer:

Digital map data sourced from Land Information New Zealand CROWN COPYRIGHT RESERVED.
The information displayed in the GIS has been taken from Whanganui District Council's databases and maps.
It is made available in good faith but its accuracy or completeness is not guaranteed. If the information is relied on in support of a resource consent it should be verified independently.

Scale 1: 25000

Saturday, June 13, 2026

**Property 23155
Locality Map**



Disclaimer:

Digital map data sourced from Land Information New Zealand CROWN COPYRIGHT RESERVED.
The information displayed in the GIS has been taken from Whanganui District Council's databases and maps.
It is made available in good faith but its accuracy or completeness is not guaranteed. If the information is relied on in support of a resource consent it should be verified independently.

Scale 1: 500

Saturday, June 13, 2026

Property 23155
Aerial Map

Disclaimer:

Digital map data sourced from Land Information New Zealand CROWN COPYRIGHT RESERVED.
The information displayed in the GIS has been taken from Whanganui District Council's databases and maps.
It is made available in good faith but its accuracy or completeness is not guaranteed. If the information is relied on in support of a resource consent it should be verified independently.

Saturday, June 13, 2026

Property 23155
Land
Information

Land Information

Data sourced from LINZ

Parcel ID	Appellation	Area	Land No
4039338	Lot 22 DP 79132	363	26457

Address Information

Data sourced from LINZ

Address ID	Address
452292	30 Kakaho Drive, Tawhero, Whanganui

Title Information

Data sourced from LINZ

Title No	Status	Type	Land District	Issue Date
WN45D/151	LIVE	Freehold	Wellington	10/10/1994

Leasehold Title Information

No Leasehold Title Information found

Disclaimer:

Digital map data sourced from Land Information New Zealand CROWN COPYRIGHT RESERVED.
The information displayed in the GIS has been taken from Whanganui District Council's databases and maps.
It is made available in good faith but its accuracy or completeness is not guaranteed. If the information is relied on in support of a resource consent it should be verified independently.

Saturday, June 13, 2026

**Property 23155
Property
Information****Values**

Data sourced from Whanganui District Council

Assessment Number	Capital Value	Improvements	Land Value
1314077800	\$ 540,000.00	\$ 355,000.00	\$ 185,000.00

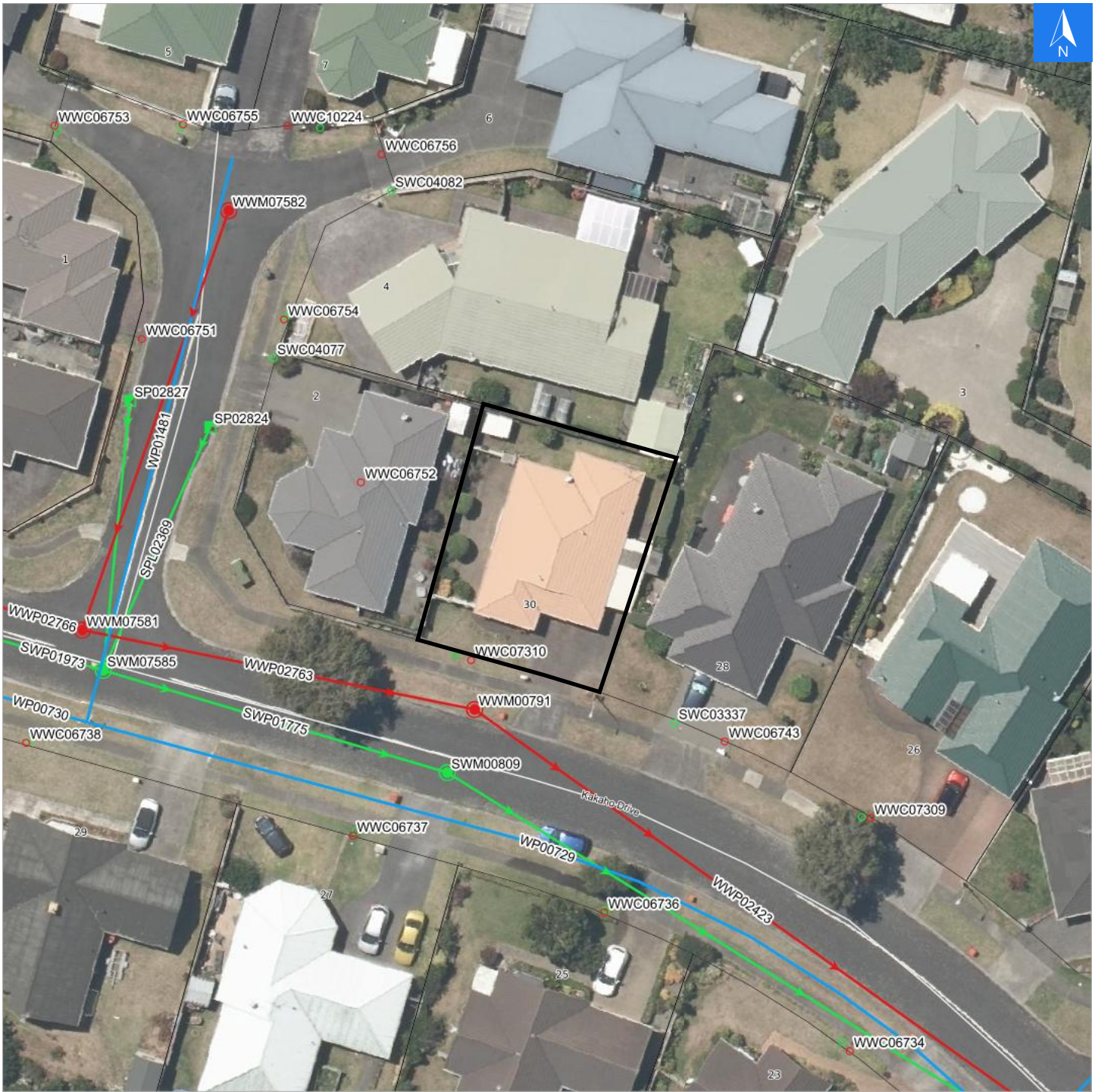
Building Consents

Data sourced from Whanganui District Council

Application	Category	Description	Start Date
BC97/11245	Minor Building Work (req. 2 insps.)	ERECT CARPORT AGAINST RESIDENCE.	05/05/1997
BC94/7955	New Residential Dwellings - under \$100000	Erect Townhouse	22/12/1994

Licenses

No Information available

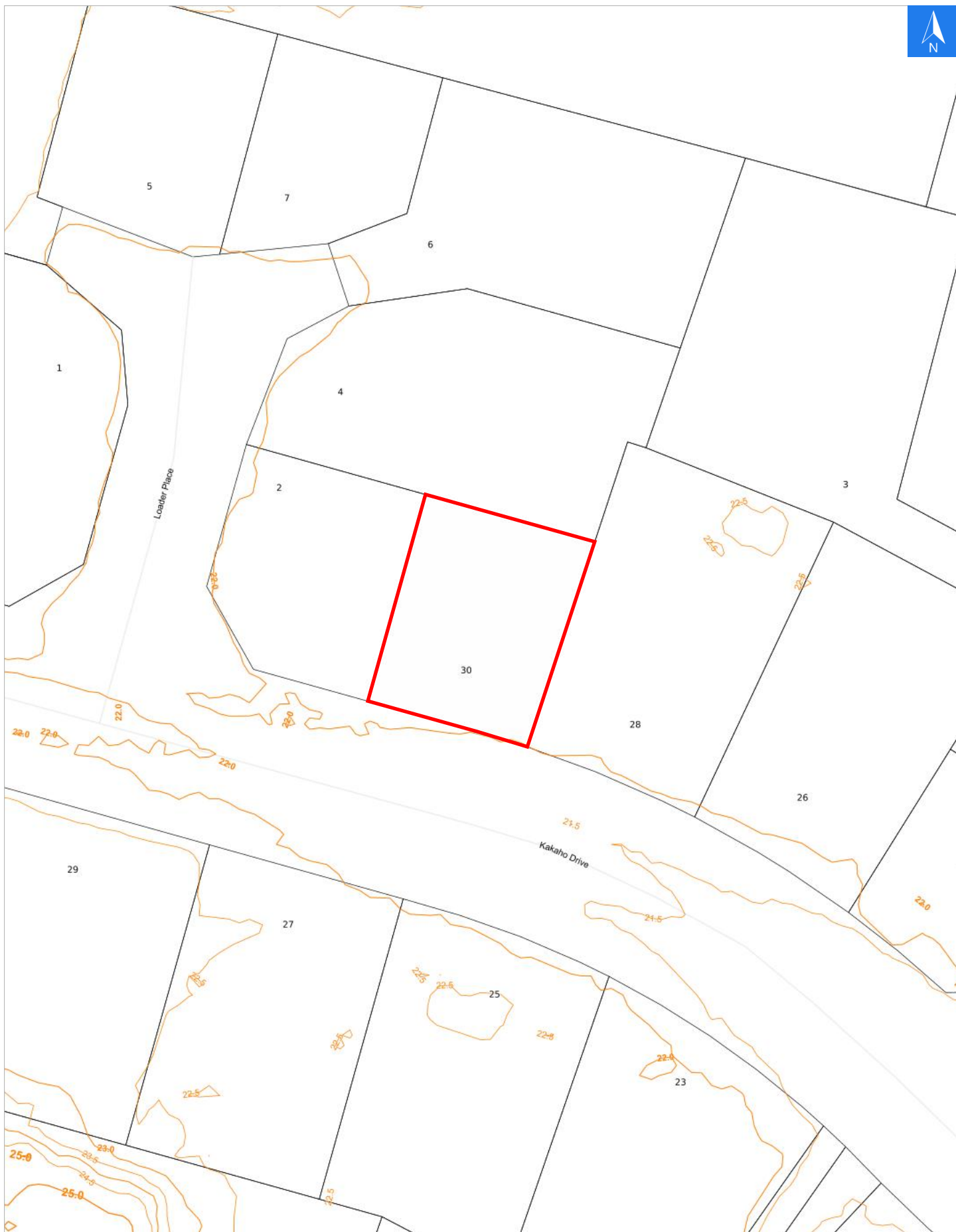


- | | | | | | |
|---|-------------------------|---|------------------------------|-----|-------------------------|
| + | Backflow | ○ | Connection | ○ | Connection |
| ○ | Connection | ☆ | Facility | ● | Manhole |
| ■ | Hydrant | ● | Manhole | ▼ | Valve |
| ▲ | Meter | ■ | Sump | ● | Asset Type Not Recorded |
| ● | Structure | ● | Asset Type Not Recorded | ◆ | Wastewater Plant Point |
| ▼ | Valve | ☆ | Stormwater Structures Point | ■ | Wastewater Plant Region |
| ■ | Tap | — | Stormwater Structures Line | — | Wastewater Lines |
| ● | Asset Type Not Recorded | ■ | Stormwater Structures Region | --- | Wastewater Re-Use Lines |
| ○ | Water Plant Point | — | Stormwater Lines | | |
| — | Water Lines | ■ | Stormwater Plant Point | | |

Disclaimer:
 Digital map data sourced from Land Information New Zealand CROWN COPYRIGHT RESERVED.
 The information displayed in the GIS has been taken from Whanganui District Council's databases and maps.
 It is made available in good faith but its accuracy or completeness is not guaranteed. If the information is relied on in support of a resource consent it should be verified independently.

Scale 1: 500
 Saturday, June 13, 2026

**Property 23155
 Utilities Map**



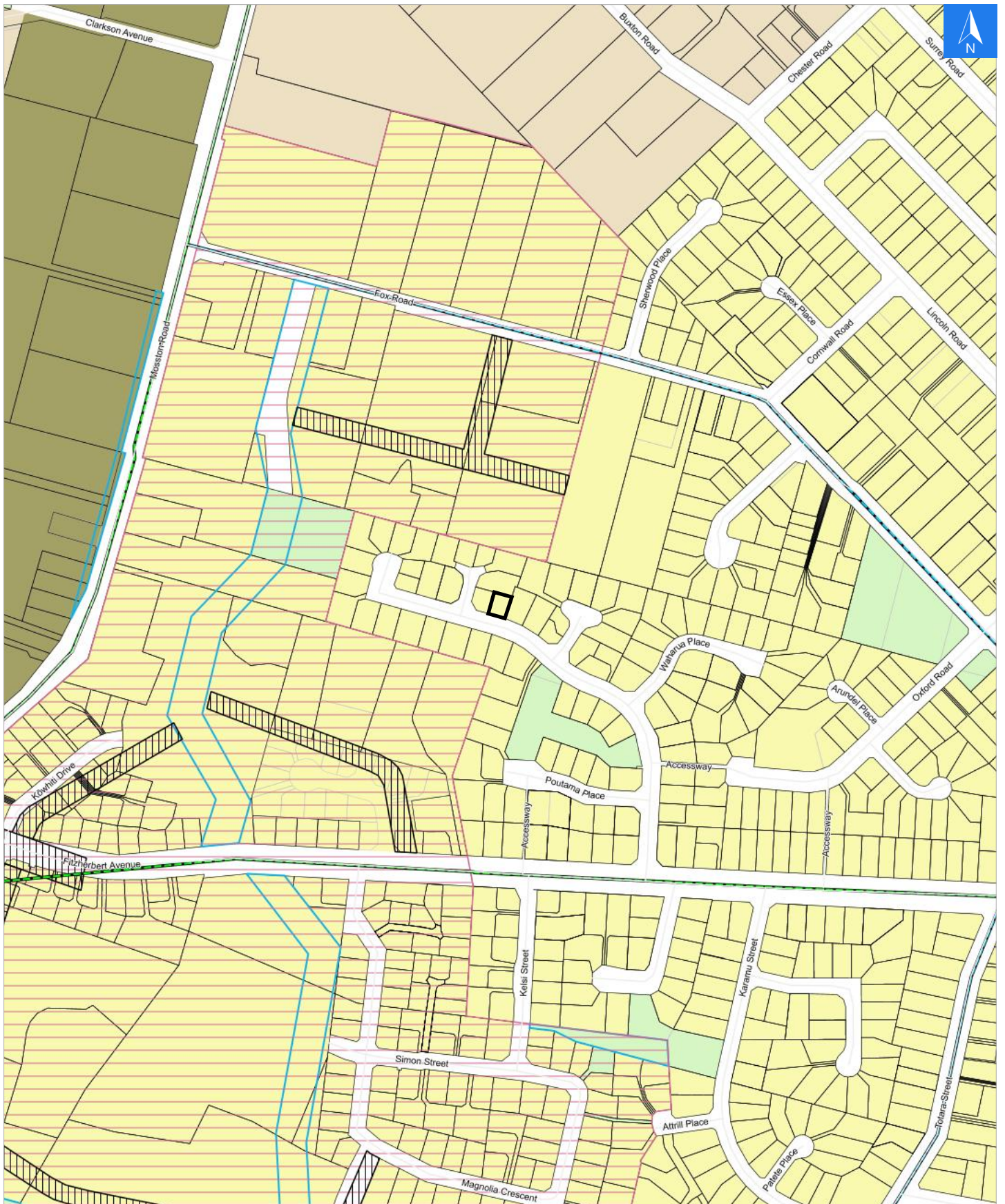
Disclaimer:

Digital map data sourced from Land Information New Zealand CROWN COPYRIGHT RESERVED.
The information displayed in the GIS has been taken from Whanganui District Council's databases and maps.
It is made available in good faith but its accuracy or completeness is not guaranteed. If the information is relied on in support of a resource consent it should be verified independently.

Scale 1: 500

Saturday, June 13, 2026

**Property 23155
Contour Map**



GRZ General Residential Zone

Disclaimer:

Digital map data sourced from Land Information New Zealand CROWN COPYRIGHT RESERVED.
The information displayed in the GIS has been taken from Whanganui District Council's databases and maps.
It is made available in good faith but its accuracy or completeness is not guaranteed. If the information is relied on in support of a resource consent it should be verified independently.

Scale 1: 5000

Saturday, June 13, 2026

Property 23155
Planning Map



Disclaimer:

Digital map data sourced from Land Information New Zealand CROWN COPYRIGHT RESERVED.
The information displayed in the GIS has been taken from Whanganui District Council's databases and maps.
It is made available in good faith but its accuracy or completeness is not guaranteed. If the information is relied on in support of a resource consent it should be verified independently.

Saturday, June 13, 2026

Planning Map Legend




Zones

-  GRZ - General Residential Zone
-  CRZ - Coastal Residential Zone
-  GRUZ - General Rural Zone
-  RPROZ - Rural Production Zone
-  RLZ - Rural Lifestyle Zone
-  SETZ - Settlement Zone
-  COMZ - CC - Central Commercial Zone
-  COMZ - OC - Outer Commercial Zone
-  COMZ - NC - Neighbourhood Commercial Zone
-  COMZ - AC - Arts and Commerce Zone
-  COMZ - RF - Riverfront Zone
-  GIZ - General Industrial Zone
-  AZ - Airport Zone
-  OSZ - Open Space Zone











Heritage

-  Marae
-  Wāhi Tūpuna Sites
-  Archaeological Sites
-  Archaeological Sites Buffers
-  Heritage Sites
-  Protected Trees

Other

-  District Boundary
-  Property
-  Land








Overlays

-  Designation
-  Coastal Environment Special Management Zone
-  View Shaft Overlay
-  Town Centre Design Guide Overlay
-  Outer Commercial Design Guide Overlay
-  Urban River Landscape Overlay
-  Airport Air Noise Boundary Overlay
-  Airport Outer Control Boundary Overlay
-  Springvale Structure Plan Area
-  North West Structure Plan Area

Roading

-  National Routes (Roading)
-  Secondary Arterials (Roading)
-  Collector Routes (Roading)
-  Indicative Roading
-  High Tension Pylons
-  High Tension Power Line

Hazards

-  Flood Level 100 Year Event Area A
-  Flood Level 200 Year Event Area B
-  Kai Iwi Extreme Risk Overlay
-  Kai Iwi High to Moderate Risk Overlay
-  Kai Iwi Safety Buffer Overlay
-  Land Stability Area A
-  Land Stability Area B

Disclaimer:

Digital map data sourced from Land Information New Zealand CROWN COPYRIGHT RESERVED.
The information displayed in the GIS has been taken from Whanganui District Council's databases and maps.
It is made available in good faith but its accuracy or completeness is not guaranteed. If the information is relied on in support of a resource consent it should be verified independently.

Saturday, June 13, 2026

**Property 23155
Planning Data**

Planning Zones

Zone
GRZ General Residential Zone

Planning Overlays

No Planning Overlays found

Designations

No Designations found

Heritage Sites

No Heritage Sites found

Wahi Tupuna Sites

No Wahi Tupuna Sites found

Archaeological Sites

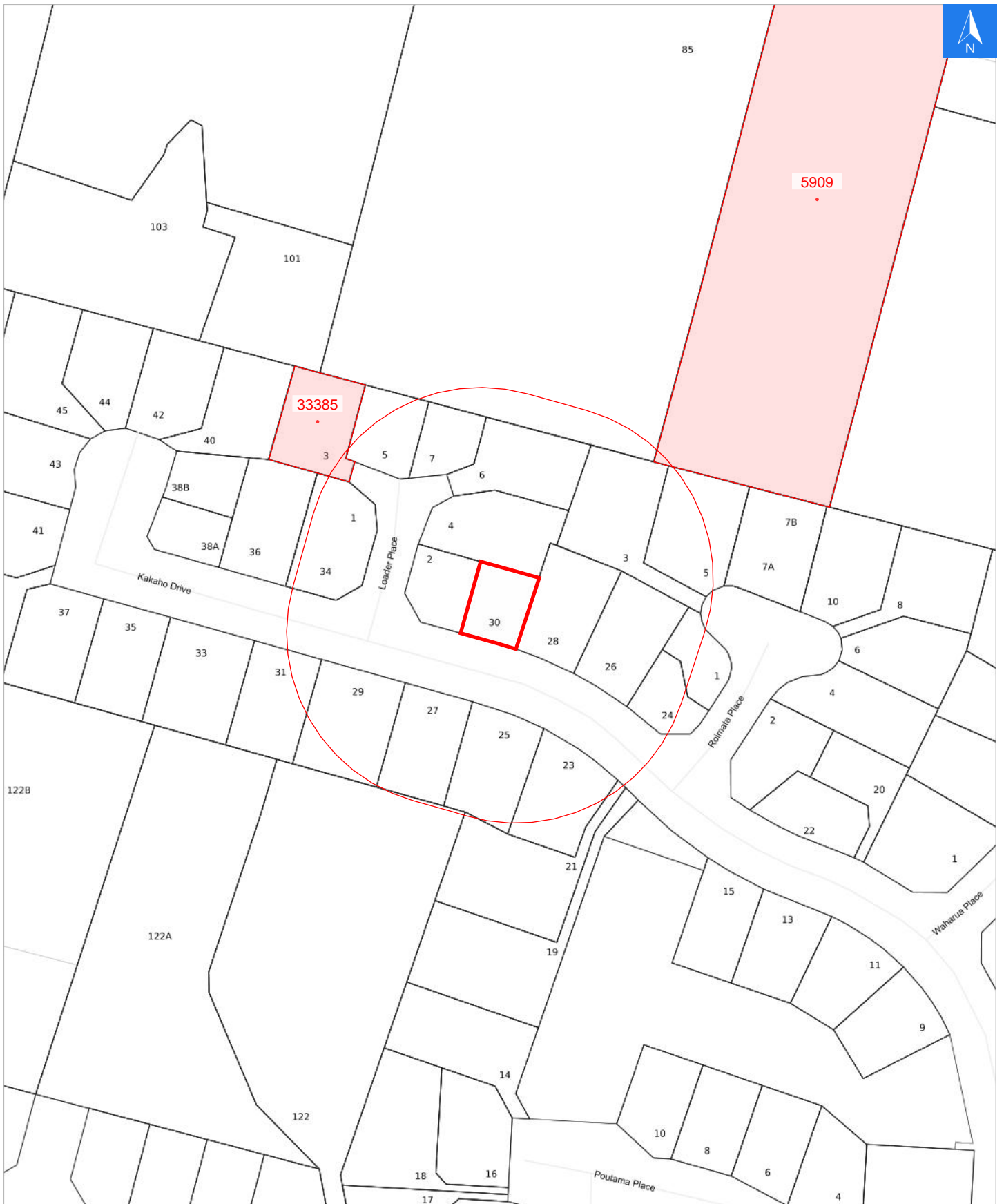
No Archaeological Sites found

Protected Trees

No Protected Trees found

Additional Information

No Additional Information found



Land Use Resource Consents within 50 metres of subject property

Disclaimer:

Digital map data sourced from Land Information New Zealand CROWN COPYRIGHT RESERVED.
 The information displayed in the GIS has been taken from Whanganui District Council's databases and maps.
 It is made available in good faith but its accuracy or completeness is not guaranteed. If the information is relied on in support of a resource consent it should be verified independently.

Scale 1: 1500

Saturday, June 13, 2026

Property 23155
Land Use
Resource
Consent Map

Disclaimer:

Digital map data sourced from Land Information New Zealand CROWN COPYRIGHT RESERVED.
The information displayed in the GIS has been taken from Whanganui District Council's databases and maps.
It is made available in good faith but its accuracy or completeness is not guaranteed. If the information is relied on in support of a resource consent it should be verified independently.

Saturday, June 13, 2026

**Land Use
Resource
Consent
Information****Land Use Resource Consents on Subject Property**

No Land Use Resource Consent Information available

Land Use Resource Consents on Adjoining Properties

No Land Use Resource Consent Information available

Land Use Resource Consents on other Nearby Properties (within 50m of subject property)

Property No	Application No	Description	Decision	Date
5909	RCLU14/0031	to construct an accessory building in front of house	Completed	01/05/2014
33385	RCLU13/0010	To construct a garage which will exceed the site coverage on a residential site	Completed	07/03/2013

Decision Terms

Approved - Consent approved

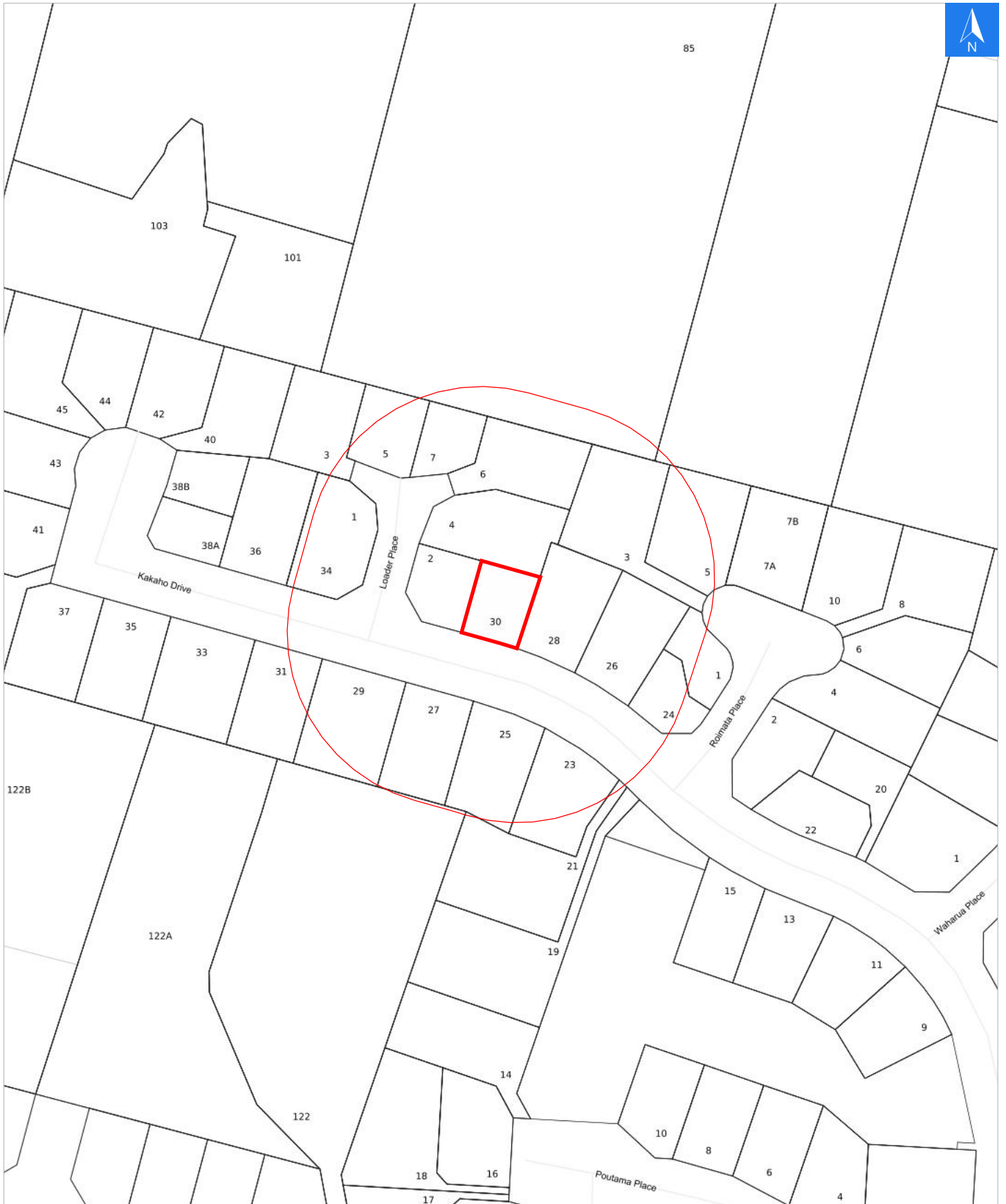
Declined - Consent not approved

Monitoring - consent approved and consent conditions currently being monitored

Completed - consent conditions met

Disclaimer

Note: the information contained only includes information held in Council's records since June 2006. Refer to the Planning page before the Planning Map for any consents issued prior to June 2006 for the subject property.



Current Subdivision Resource Consents within 50 metres of subject property

Disclaimer:

Digital map data sourced from Land Information New Zealand CROWN COPYRIGHT RESERVED.
 The information displayed in the GIS has been taken from Whanganui District Council's databases and maps.
 It is made available in good faith but its accuracy or completeness is not guaranteed. If the information is relied on in support of a resource consent it should be verified independently.

Scale 1: 1500

Saturday, June 13, 2026

**Property 23155
 Subdivision
 Resource
 Consents Map**

Disclaimer:

Digital map data sourced from Land Information New Zealand CROWN COPYRIGHT RESERVED.
The information displayed in the GIS has been taken from Whanganui District Council's databases and maps.
It is made available in good faith but its accuracy or completeness is not guaranteed. If the information is relied on in support of a resource consent it should be verified independently.

Saturday, June 13, 2026

**Subdivision
Resource
Consents
Information**

Subdivision Resource Consents on Subject Property

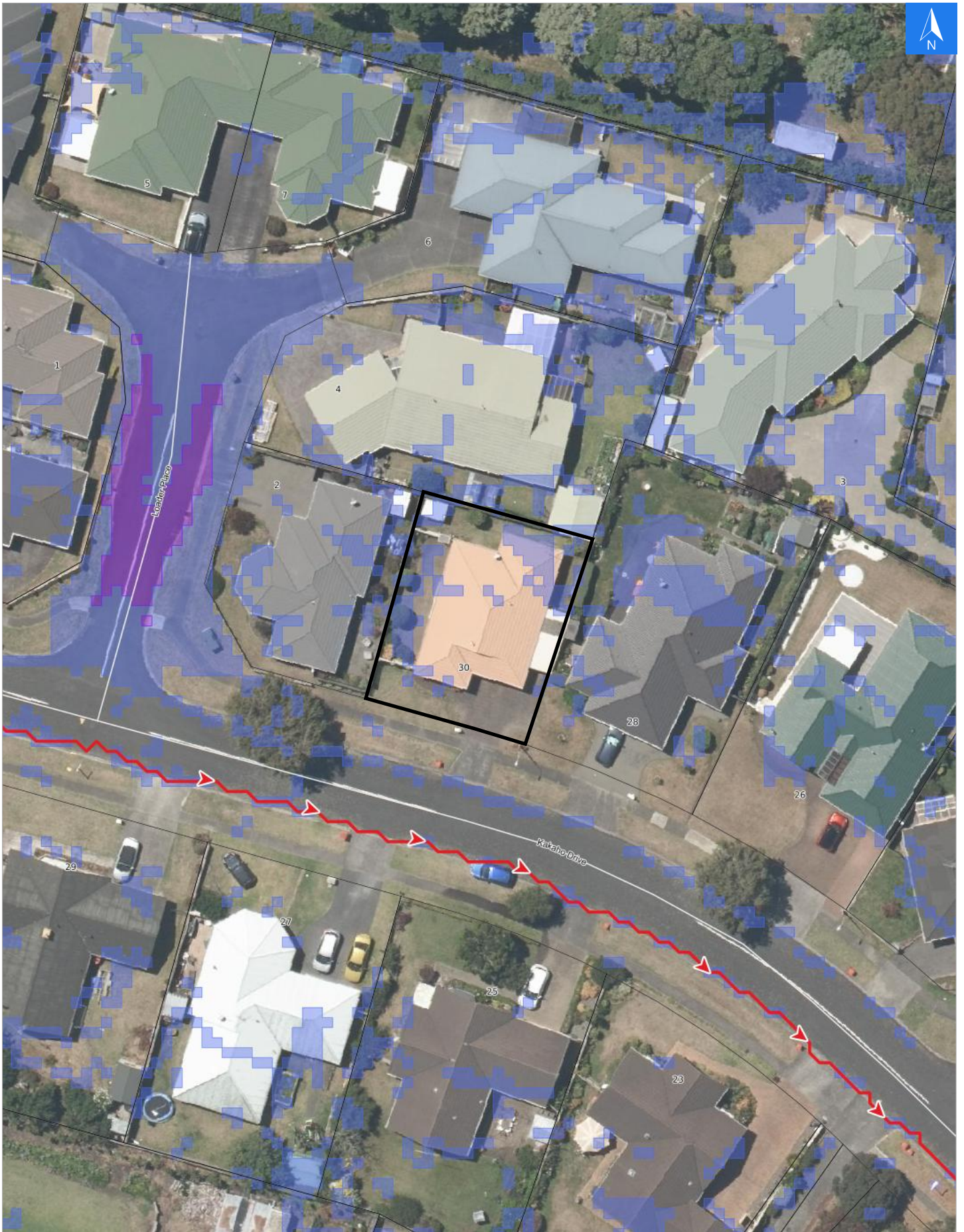
No Subdivision Resource Consents Information available

Subdivision Resource Consents on Adjoining Properties

No Subdivision Resource Consents Information available

Subdivision Resource Consents on other Nearby Properties (within 50m of subject property)

No Subdivision Resource Consents Information available








Disclaimer:

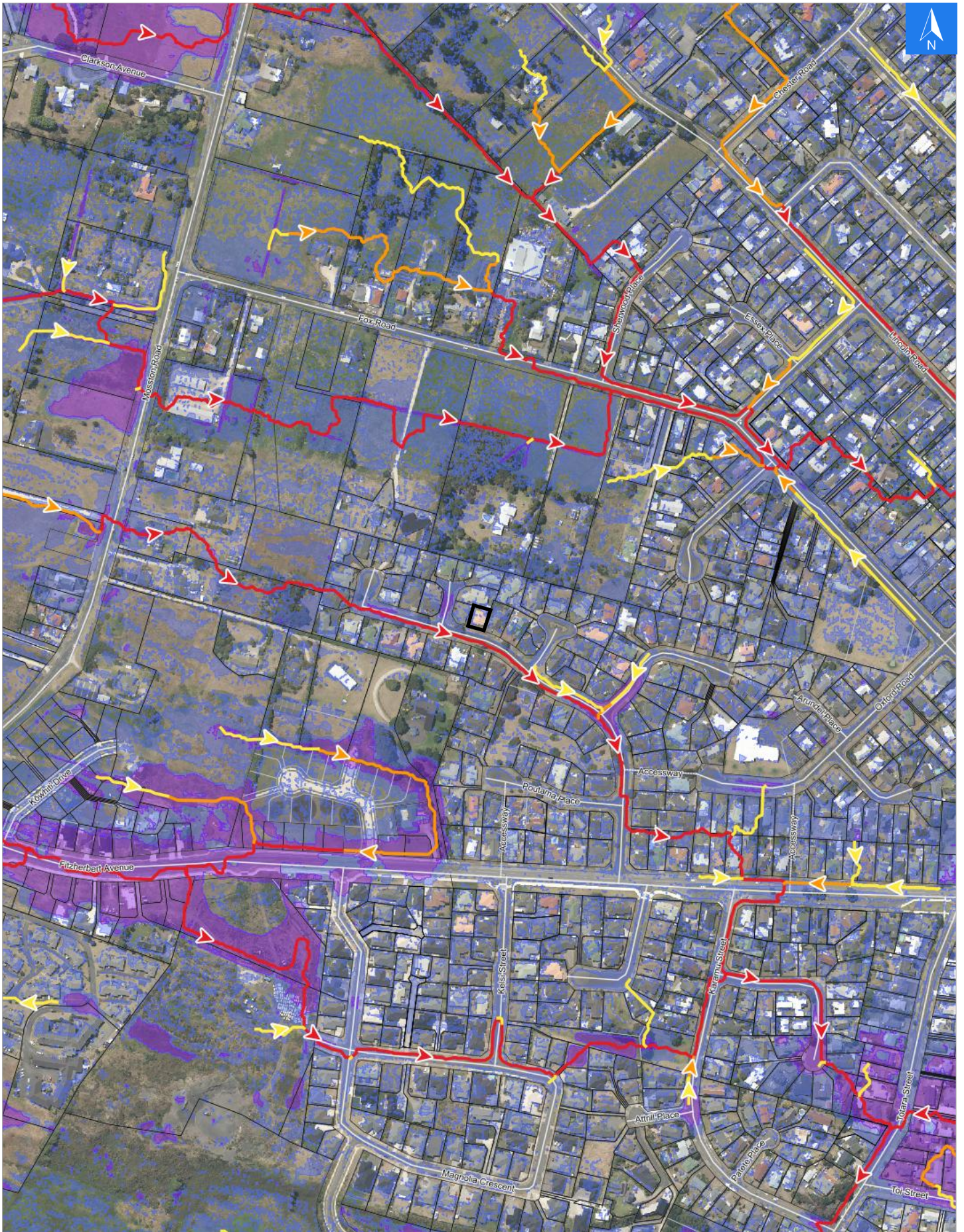
Digital map data sourced from Land Information New Zealand CROWN COPYRIGHT RESERVED.
The information displayed in the GIS has been taken from Whanganui District Council's databases and maps.
It is made available in good faith but its accuracy or completeness is not guaranteed. If the information is relied on in support of a resource consent it should be verified independently.

Scale 1: 500

Saturday, June 13, 2026

-  Depression Areas greater than 300mm
-  Depression Areas less than 300mm
-  5Ha Overland Flow Path
-  2Ha Overland Flow Path
-  1Ha Overland Flow Path

**Property 23155
Overland Flow
Paths Map**



Disclaimer:

Digital map data sourced from Land Information New Zealand CROWN COPYRIGHT RESERVED.
 The information displayed in the GIS has been taken from Whanganui District Council's databases and maps.
 It is made available in good faith but its accuracy or completeness is not guaranteed. If the information is relied on in support of a resource consent it should be verified independently.

Scale 1: 5000

Saturday, June 13, 2026

- Depression Areas greater than 300mm
- Depression Areas less than 300mm
- 5Ha Overland Flow Path
- 2Ha Overland Flow Path
- 1Ha Overland Flow Path

**Property 23155
 Overland Flow
 Paths Map**

Guidance Note to Overland Flow Path Disclaimer

The overland flow path represents the predicted path of storm water associated with an unusually large rain event and has been derived with all above ground structures stripped from the LiDAR. Some of those structures (e.g. fences and buildings) may divert the overland flow path, producing delineations that differ to those presented in the information. Any rain event that exceeds the capacity of the Council's stormwater infrastructure will cause varying levels of inundation.

Assumptions

As no two rainfall events are the same a theoretical uniform rain event was assumed for the analysis in order to simulate a rainfall event that would constitute an unusually large rain event. The storm water network would be unavailable during the event owing to inundation.

The above assumptions may not reflect the catchment behaviour during an actual rain event of a similar magnitude owing to rainfall duration and concentration; e.g. some areas may flood in a specific event but not in a subsequent large event and vice versa.

Accordingly, while realistic in some areas it may be over-conservative in other areas depending on the interaction between the above ground conditions, and the storm water network. The full effect of an unusually large rain event has not yet been analysed.

The presence of an overland flow path and an extreme rain event does not necessarily equate to a **flooding event** which means "an overflow of storm water from Council's storm water system that enters a habitable floor²".

In order to understand **flooding events** Council is using the overland flow path information to do further analysis on water levels and flow velocities to ascertain the number of habitable floors that are at risk; that information is not yet available.

Recommendation

Council recommends further overland flow path information enquiry be made with Council's Infrastructure Division or with a qualified professional.

1. LIDAR, which stands for *Light Detection and Ranging*, is a remote sensing method that uses light in the form of a pulsed laser to measure ranges (variable distances) to the Earth. These light pulses (combined with other data recorded by the airborne system) generate precise, three-dimensional information about the shape of the Earth and its surface characteristics.
2. Depression areas may only partially fill during an unusually large rain event.

Guidance Note to Liquefaction

Explanation for Liquefaction Susceptibility rating:

The data in this LIM regarding liquefaction, is based on a study completed by GNS (Institute of Geological and Nuclear Sciences).

The table below explains the potential effects of liquefaction during various earthquake intensities.

Susceptibility to Liquefaction	Felt Effects of Earthquakes of Varying Intensities Modified Mercalli (MM) Scale
Low Susceptibility	MM9 - minor subsidence, isolated cracks and fissures
Moderate Susceptibility	MM8 – minor subsidence, isolated cracks and fissures MM9 – moderate subsidence, minor cracks and fissures
High Susceptibility	MM7 – minor subsidence, isolated cracks and fissures MM8 – moderate subsidence, minor cracks and fissures MM9 – major subsidence, large cracks and fissures

The [Modified Mercalli \(MM\) Scale](#) is an indicator of an earthquake's effects on people and their environment. It shows the relationship between the strength of shaking at ground level and the degree of damage. See below for further information.

Category of Earthquake	Definition of Human Response and Consequence
MM1: Imperceptible	Barely sensed by only a few people
MM2: Scarcely felt	Felt only by a few people at rest in houses or on upper floors.
MM3: Weak	Felt indoors as a light vibration. Hanging objects may swing slightly.
MM4: Largely observed	Generally noticed indoors, but not outside, as a moderate vibration or jolt. Light sleepers may be awakened. Walls may creak, and glassware, crockery, doors or windows rattle.
MM5: Strong	Generally felt outside and by almost everyone indoors. Most sleepers are awakened and a few people alarmed. Small unstable objects are shifted or overturned, and pictures knock against the wall. Some glassware and crockery may break, and loosely secured doors may swing open and shut.
MM6: Slightly damaging	Felt by all. People and animals are alarmed, and many run outside. Walking steadily is difficult. Furniture and appliances may move on smooth surfaces, and objects fall from walls and shelves. Glassware and crockery break. Slight non-structural damage to buildings may occur
MM7: Damaging	General Alarm. People experience difficulty standing. Furniture and appliances are shifted. Substantial damage to fragile or unsecured objects. A few weak buildings are destroyed.
MM8: Heavily damaging	Alarm may approach panic. A few buildings are damaged and some weak buildings are destroyed
MM9: Destructive	Some buildings are damaged and many weak buildings are destroyed.






Disclaimer:

Digital map data sourced from Land Information New Zealand CROWN COPYRIGHT RESERVED.
The information displayed in the GIS has been taken from Whanganui District Council's databases and maps.
It is made available in good faith but its accuracy or completeness is not guaranteed. If the information is relied on in support of a resource consent it should be verified independently.

Scale 1: 500

Saturday, June 13, 2026

-  Grazing Licence
-  Licence to Occupy
-  Uncategorised

Property 23155
License to
Occupy Map



Disclaimer:

Digital map data sourced from Land Information New Zealand CROWN COPYRIGHT RESERVED.
 The information displayed in the GIS has been taken from Whanganui District Council's databases and maps.
 It is made available in good faith but its accuracy or completeness is not guaranteed. If the information is relied on
 in support of a resource consent it should be verified independently.

Scale 1: 2000

Saturday, June 13, 2026



HAIL Sites

Property 23155
HAIL Sites Map

Disclaimer:

Digital map data sourced from Land Information New Zealand CROWN COPYRIGHT RESERVED.
The information displayed in the GIS has been taken from Whanganui District Council's databases and maps.
It is made available in good faith but its accuracy or completeness is not guaranteed. If the information is relied on in support of a resource consent it should be verified independently.

Saturday, June 13, 2026

Property 23155
HAIL Sites Data

Hazardous Activities and Industries List 2011 (HAIL)

No Hazardous Activities and Industries List 2011 (HAIL) information currently recorded.

For further information pertaining to the Hazardous Activities and Industries List 2011 (HAIL) please contact Planning @ 06 349 0001

Additional information can also be found on the Ministry for the Environment website at:

<http://www.mfe.govt.nz/land/hazardous-activities-and-industries-list-hail>

Note

This property is not listed on our database of Hazardous Activities and Industries List 2011 (HAIL) sites at this point in time. Although not listed on our database, previous uses on the site may have involved the use of hazardous substances.

Disclaimer:

Digital map data sourced from Land Information New Zealand CROWN COPYRIGHT RESERVED.
 The information displayed in the GIS has been taken from Whanganui District Council's databases and maps.
 It is made available in good faith but its accuracy or completeness is not guaranteed. If the information is relied on
 in support of a resource consent it should be verified independently.

Saturday, June 13, 2026

Property 23155 Schedule of Map Pages

Not all Map Pages may be applicable to the subject property, the schedule below details which pages are generated and which pages are not.

Page Name	Page Generated	Reason
Cover Page	True	
Disclaimers	True	
Aerial Map	True	
Land Information	True	
Planning Map	True	
Planning Map Legend	True	
Planning Data	True	
Guidance Note Land Stability	True	
Utilities Map	True	
Overland Flow Paths Map	True	
Guidance Note to Overland Flow Disclaimer	True	
Flooding Map	False	Property greater than 500m from Flood Risk Areas
Guidance Note to Flood Risk A and B	False	Property greater than 500m from Flood Risk Areas
Liquefaction Map	True	
Guidance Note to Liquefaction	True	
Tsunami Map	False	Property greater than 500m from Tsunami Zones
Guidance Note to Tsunami Zones	False	Property greater than 500m from Tsunami Zones
Salt Spray Zone Map	False	Property greater than 500m from Salt Spray Zone
Guidance Note to Sea/Salt Spray	False	Property greater than 500m from Salt Spray Zone
HAIL Sites Map	True	
HAIL Sites Data	True	
Resource Consents Map	True	
Resource Consents Information	True	
Coastal Erosion Hazard and Risk Assessment Area Map	False	Property is not affected by the Coastal Erosion Hazard and Risk Assessment Area
Coastal Erosion Hazard and Risk Assessment Area Information	False	Property is not affected by the Coastal Erosion Hazard and Risk Assessment Area
Schedule of Map Pages	True	