



**RECORD OF TITLE
UNDER LAND TRANSFER ACT 2017
FREEHOLD**

**Guaranteed Search Copy issued under Section 60 of the Land
Transfer Act 2017**




R. W. Muir
Registrar-General
of Land

Identifier 460220
Land Registration District Canterbury
Date Issued 27 April 2009

Prior References
431535

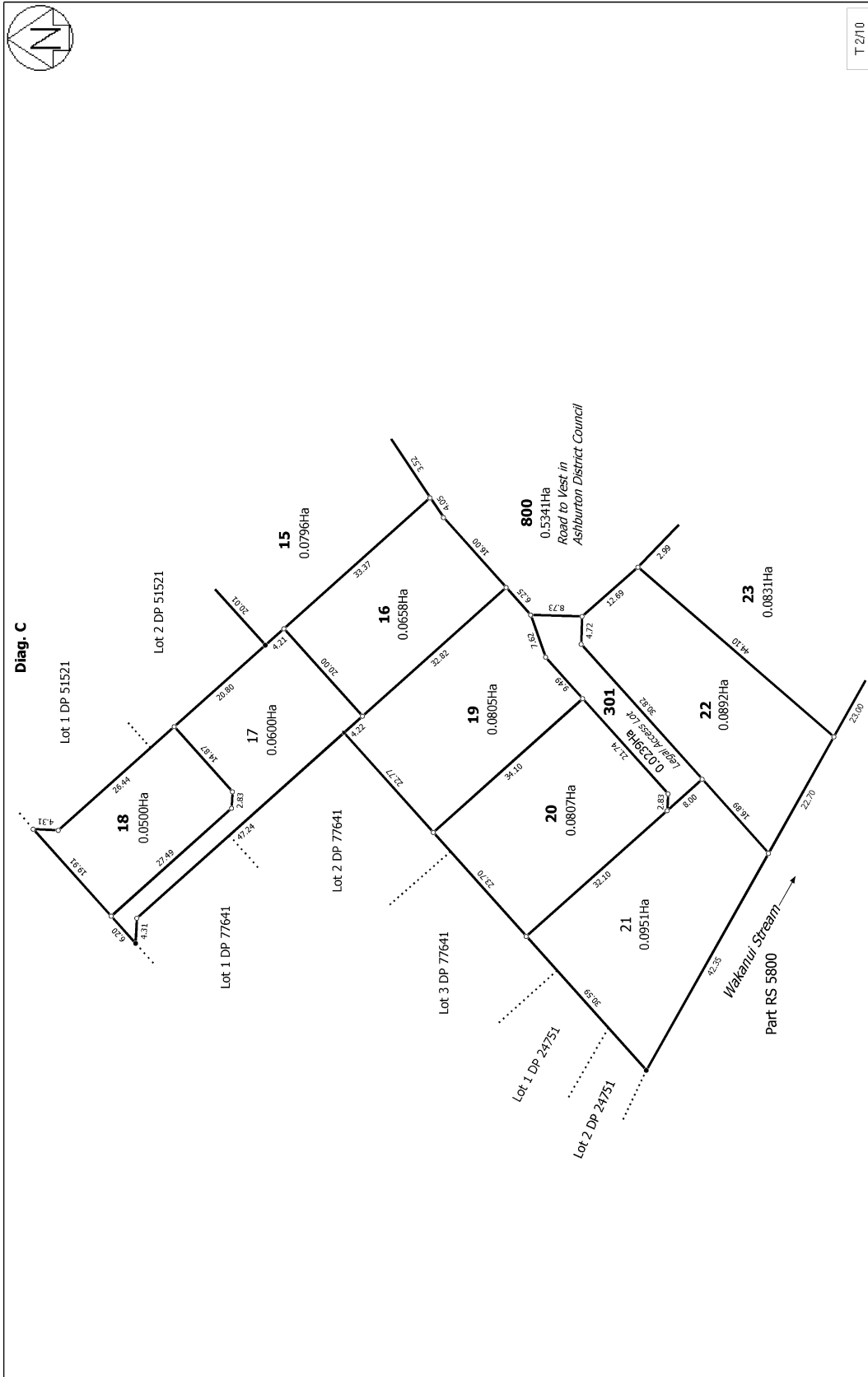
Estate Fee Simple
Area 803 square metres more or less
Legal Description Lot 28 Deposited Plan 415429

Registered Owners

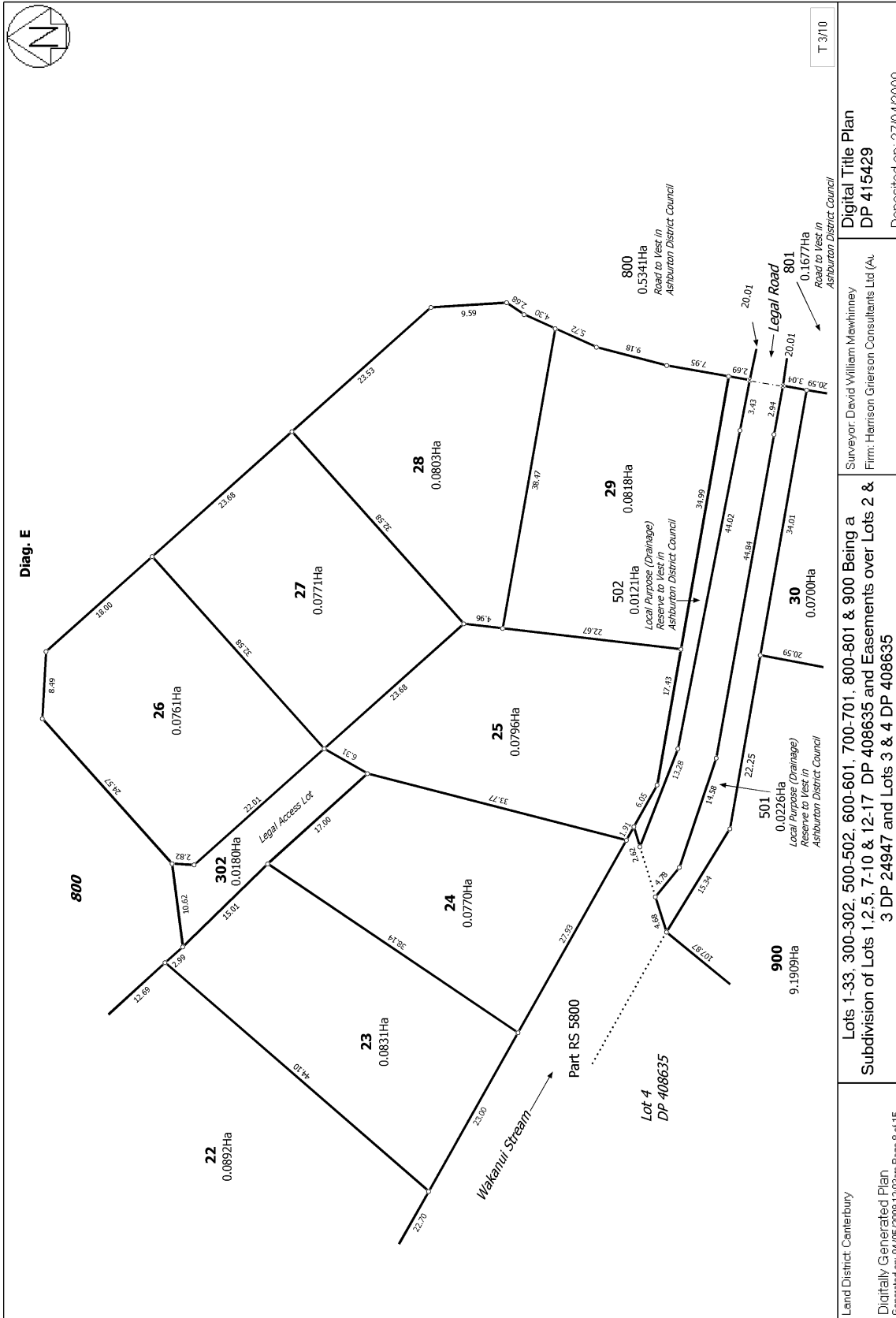
Shane Ricky Enright as to a 1/2 share
Corinne Michele Delainey as to a 1/2 share

Interests

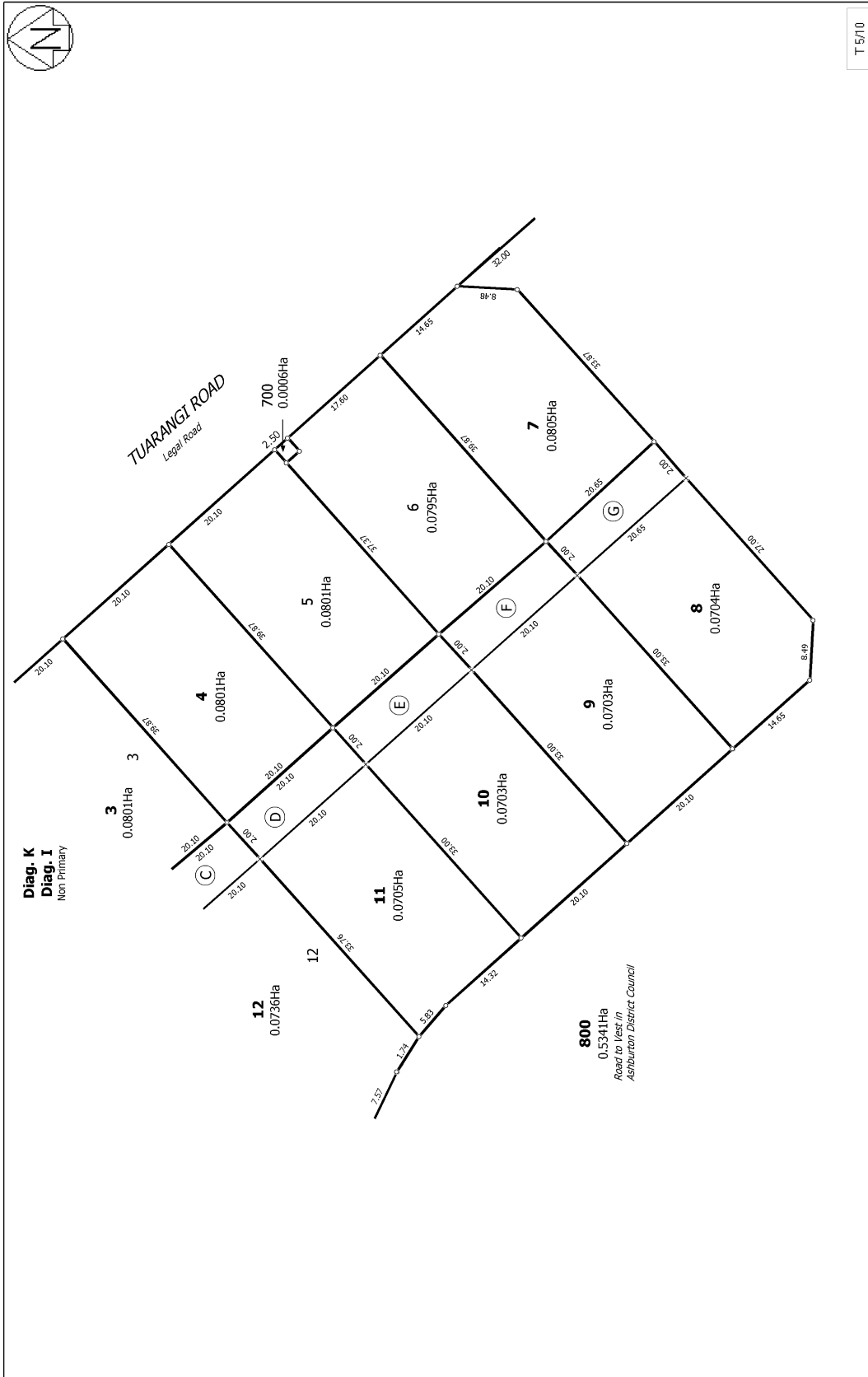
Land Covenant in Easement Instrument 8143622.9 - 27.4.2009 at 12:23 pm (Limited as to Duration)
8143622.11 Consent Notice pursuant to Section 221 Resource Management Act 1991 - 27.4.2009 at 12:23 pm
9651999.3 Mortgage to (now) ASB Bank Limited - 28.3.2014 at 9:20 am



<p>Land District: Canterbury Digitally Generated Plan Generated on: 04/05/2009 12:03pm Page 7 of 15</p>	<p>Lots 1-33, 300-302, 500-502, 600-601, 700-701, 800-801 & 900 Being a Subdivision of Lots 1, 2, 5, 7-10 & 12-17 DP 408635 and Easements over Lots 2 & 3 DP 24947 and Lots 3 & 4 DP 408635</p>	<p>Surveyor: David William Mawhinney Firm: Harrison Grierson Consultants Ltd (A.)</p>	<p>Digital Title Plan DP 415429</p> <p>Deposited on: 27/04/2009</p>	<p>T 2/10</p>
---	--	---	--	---------------



Land District: Canterbury Digitally Generated Plan Generated on: 04/05/2009 12:03pm Page 6 of 15	Lots 1-33, 300-302, 500-502, 600-601, 700-701, 800-801 & 900 Being a Subdivision of Lots 1, 2, 5, 7-10 & 12-17 DP 408635 and Easements over Lots 2 & 3 DP 24947 and Lots 3 & 4 DP 408635	Surveyor: David William McWhimney Firm: Harrison Grierson Consultants Ltd (A.)
Digital Title Plan DP 415429 Deposited on: 27/04/2009		



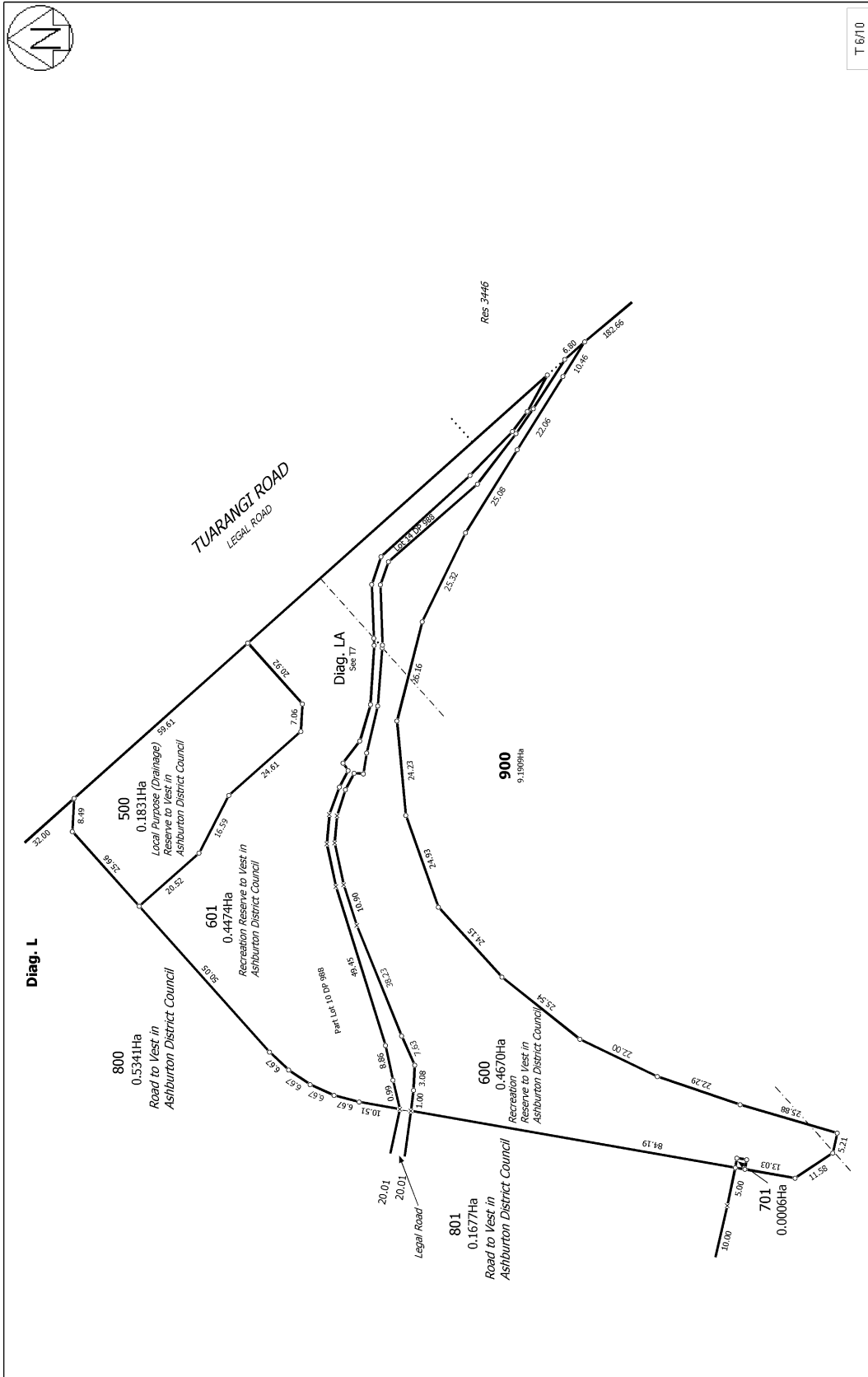
Land District: Canterbury
Digitally Generated Plan
Generated on: 04/05/2009 12:03pm Page 10 of 15

Lots 1-33, 300-302, 500-502, 600-601, 700-701, 800-801 & 900 Being a
Subdivision of Lots 1, 2, 5, 7, 10 & 12-17 DP 408635 and Easements over Lots 2 &
3 DP 24947 and Lots 3 & 4 DP 408635

Surveyor: David William Mawhinney
Firm: Harrison Grierson Consultants Ltd (A.)

Digital Title Plan
DP 415429
Deposited on: 27/04/2009

T 5/10



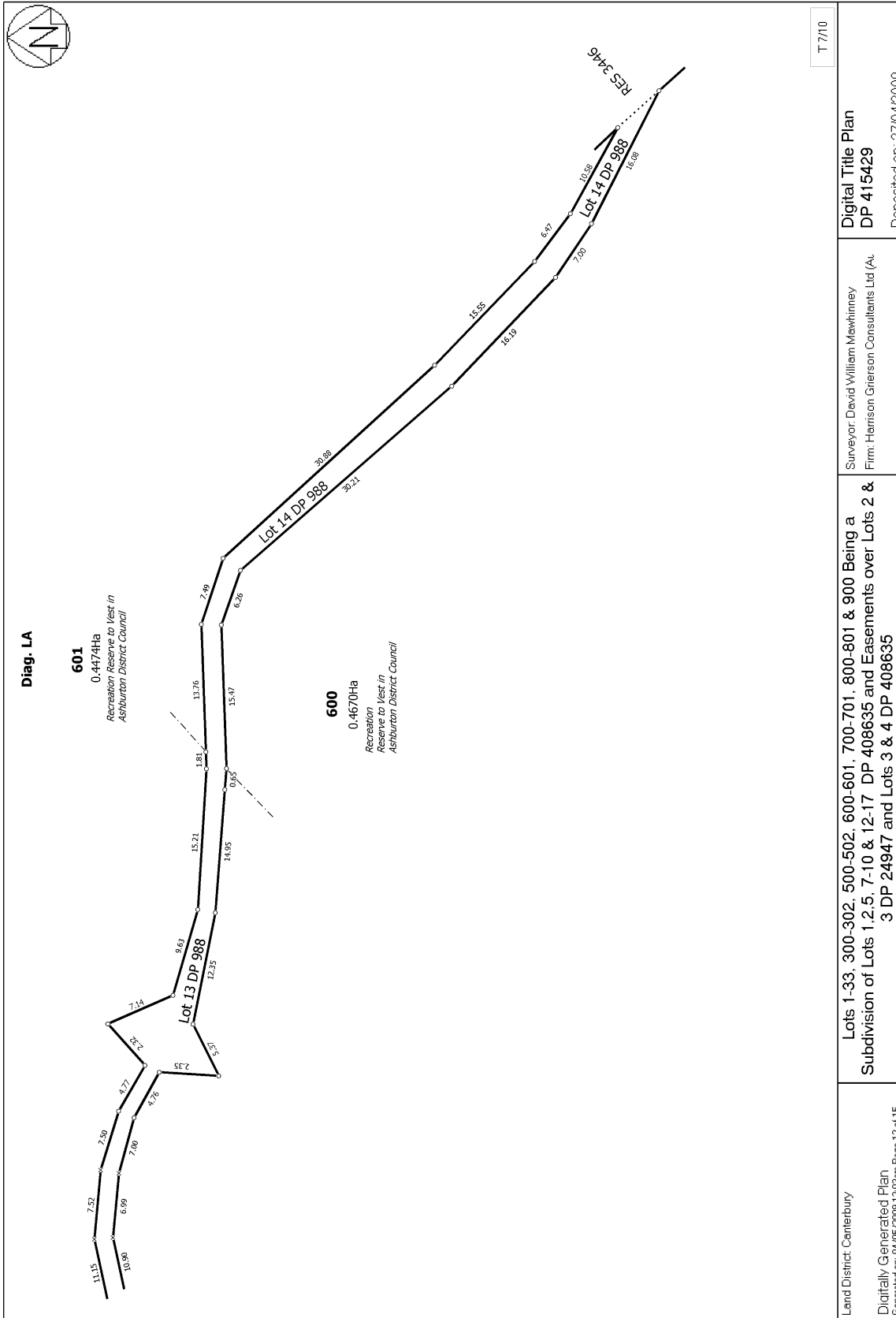
T 67/10

Digital Title Plan
DP 415429
 Deposited on: 27/04/2009

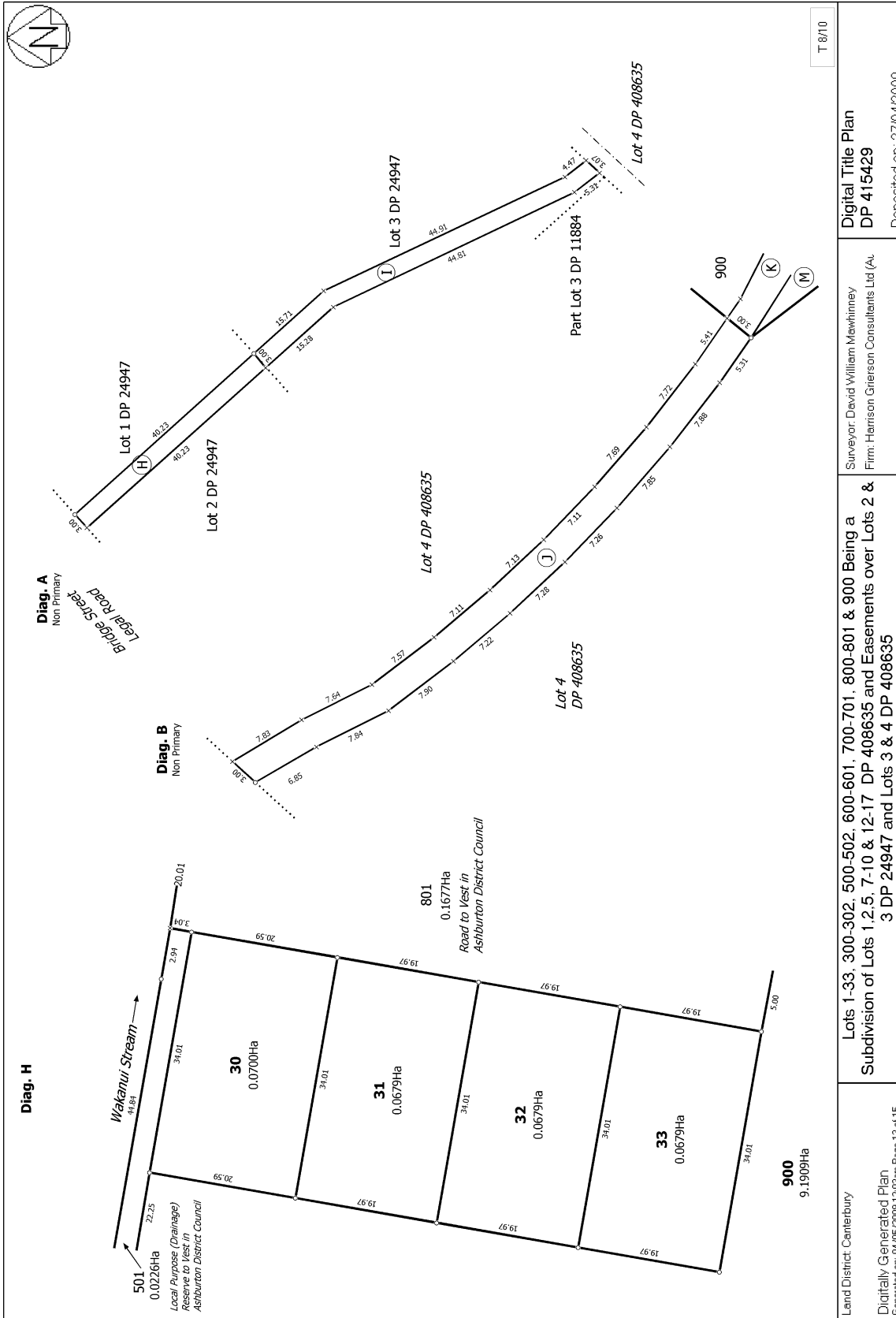
Surveyor: David William Mawhinney
 Firm: Harrison Grierson Consultants Ltd (A.)

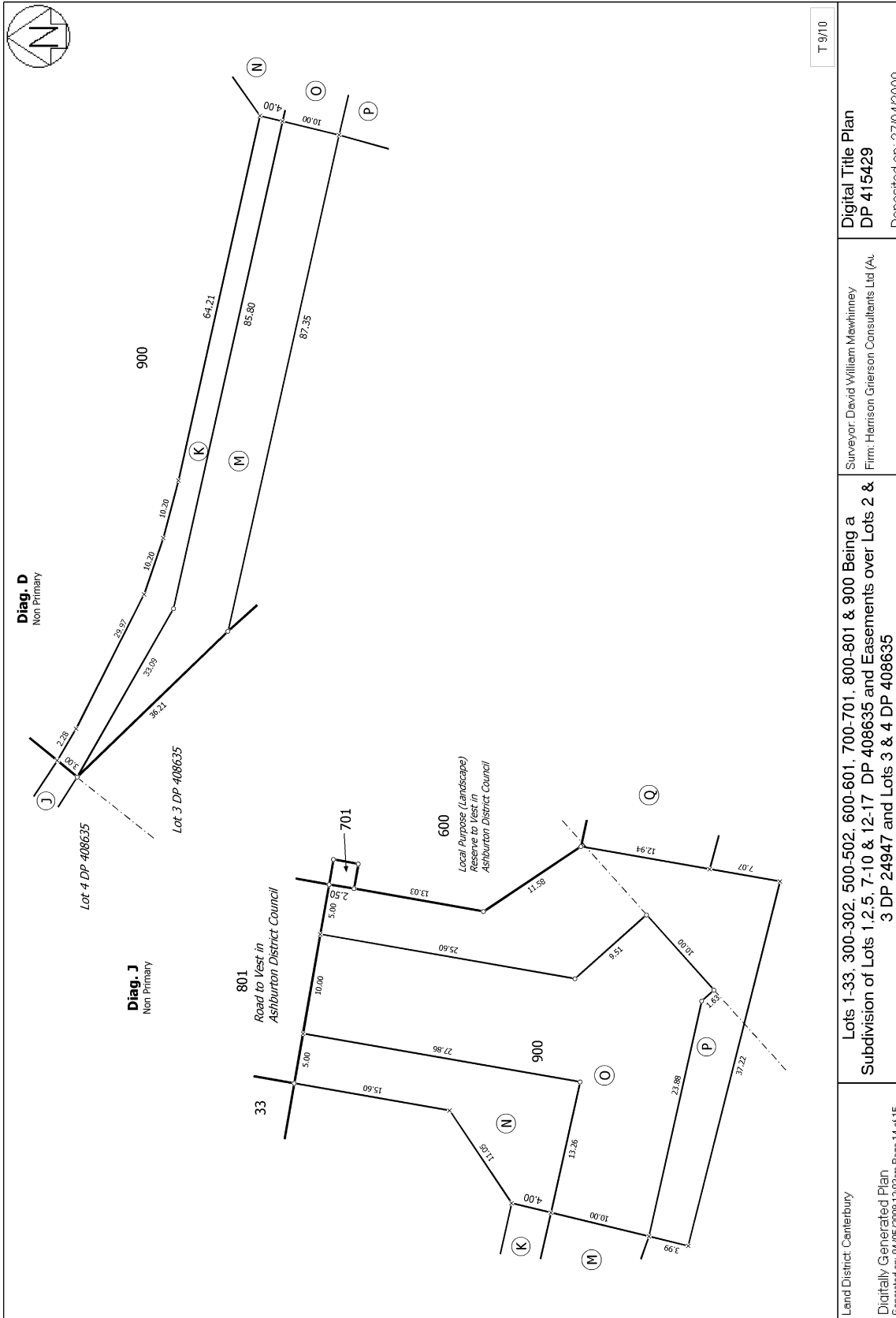
Lots 1-33, 300-302, 500-502, 600-601, 700-701, 800-801 & 900 Being a Subdivision of Lots 1, 2, 5, 7-10 & 12-17 DP 408635 and Easements over Lots 2 & 3 DP 24947 and Lots 3 & 4 DP 408635

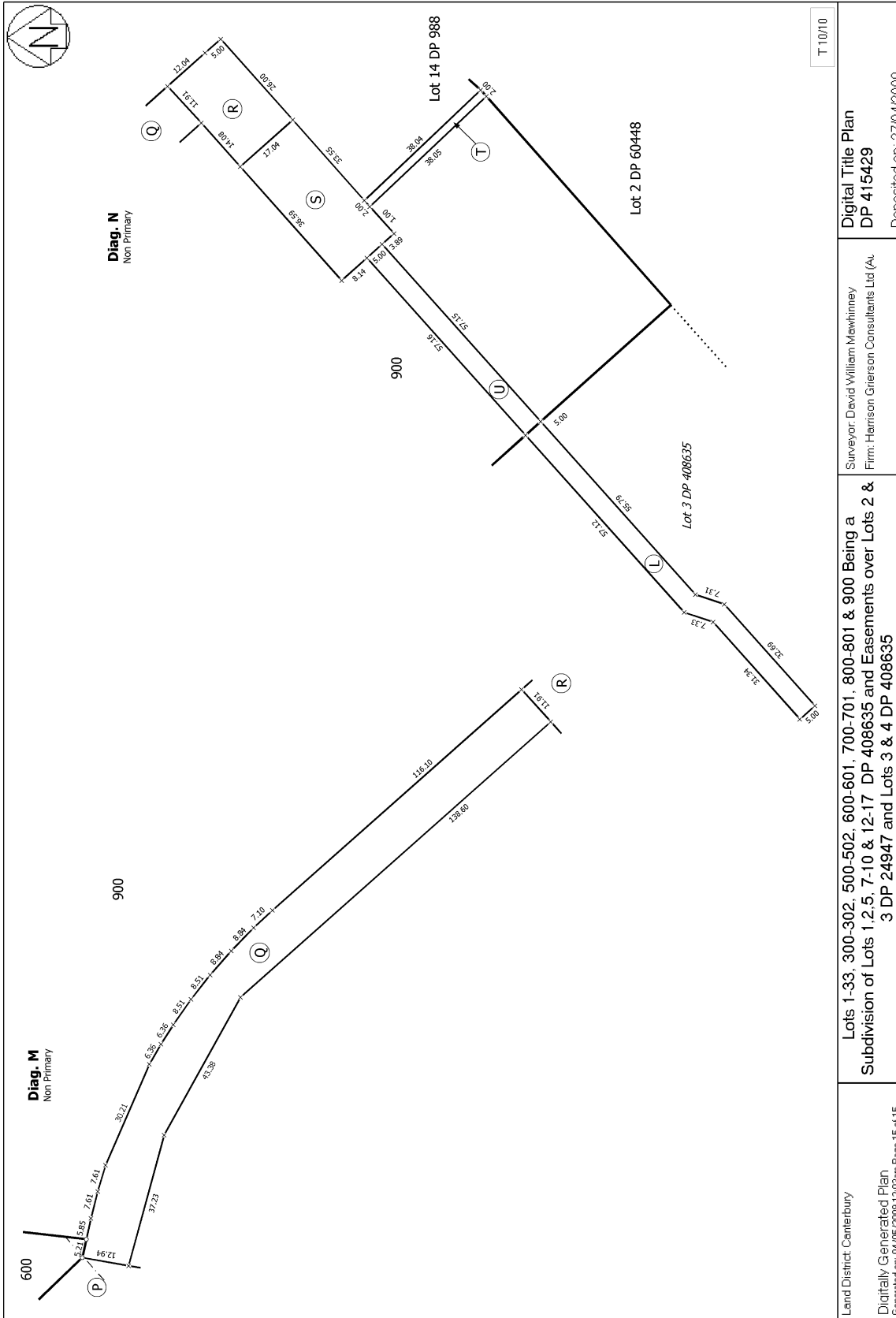
Land District: Canterbury
 Digitally Generated Plan
 Generated on: 04/05/2009 12:03pm Page 11 of 15



Land District: Canterbury	Surveyor: David William Mawhinney Firm: Harrison Grierson Consultants Ltd (A)	Digital Title Plan DP 415429	Deposited on: 27/04/2009
Digitally Generated Plan Generated on: 04/05/2009 12:03pm Page 12 of 15	Lots 1-33, 300-302, 500-502, 600-601, 700-701, 800-801 & 900 Being a Subdivision of Lots 1, 2, 5, 7, 10 & 12-17 DP 408635 and Easements over Lots 2 & 3 DP 24947 and Lots 3 & 4 DP 408635		







T 10/10

Digital Title Plan
DP 415429

Surveyor: David William McWhinney
Firm: Harrison Grierson Consultants Ltd (A)

Lots 1-33, 300-302, 500-502, 600-601, 700-701, 800-801 & 900 Being a
Subdivision of Lots 1, 2, 5, 7, 10 & 12-17 DP 408635 and Easements over Lots 2 &
3 DP 24947 and Lots 3 & 4 DP 408635

Land District: Canterbury
Digitally Generated Plan
Generated on: 04/05/2009 12:03pm Page 15 of 15

Deposited on: 27/04/2009