



ARIZTO

392 Riwaka-Kaiteriteri Road

Kaiteriteri

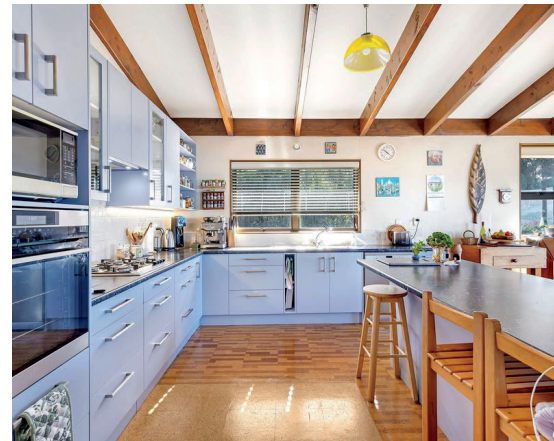
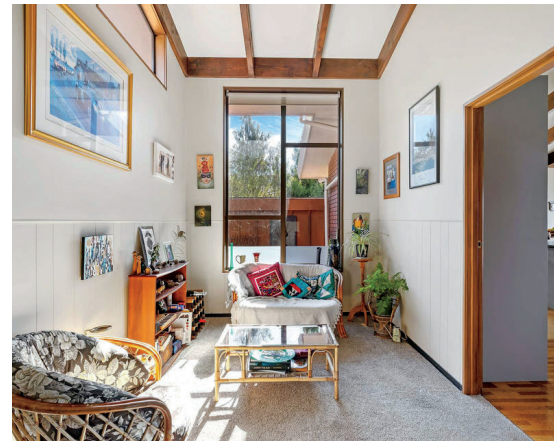
Deadline Sale: Monday 13th October

 **3+**  **2+**  **6**

Floor Area: 390 sqm (approx)

Land Area: 1,080 sqm (approx)

Where golden light meets ocean blue,
This home invites a brighter view.
Elevated grace with room to roam,
A sleepout too—your guests feel home.
Modern touches, warm and neat,
With every space a calm retreat.
The breeze rolls in, the garden sways,
A peaceful life in sunlit days.
Close to beaches, tucked away,
Yet near enough for town café.
Whether morning walks or evening wine,
This haven offers space and time.
A rare delight, serene and true—
A coastal gem awaits for you.



Lillie Broster-Turley

 020 4130 0125

 lillie.bt@arizto.co.nz

Licensed Salesperson (REAA 2008)



- ✓ A Low Fair Commission
- ✓ No Upfront Costs
- ✓ Premium Marketing
- ✓ No Sale, No Fee

The Details

Address	392 Riwaka-Kaiteriteri Road, Kaiteriteri
Certificate of Title	NL4A/406
Legal Description	Lot 5 Deposited Plan 8455
Zoning	Residential
Capital Value	\$1,000,000
Annual Rates	\$5,227.57
Land Area (approx) sqm	1080
Floor Area (approx) sqm	390
Building age	1970s
Water Supply	Mains water and tank water (17000L) UV water filtration. If the water tank gets dry you can switch to town supply with a tap. High pressure with mains.
Waste Water	Mains waste
Water Heating	Electric immersion heater
Insulation	Fully insulated, walls roof and under floor
Cladding	Brick and block
Roof	Long-run steel
Electrics	All electrics up to date (certificate available)
Joinery	Secondary glazing throughout, aluminium
Foundation	Concrete pad
Bedrooms	3, all large double main bedroom with large dressing room and en suit
Bathrooms	2 and separate toilet
Kitchen	Gas hob, waste disposal, open plan dining, views from Tapu Bay - Nelson, ample storage, double pantry with power
Internet	Fibre internet

Continued...

Heating	Hallway radiator, heat-pump x 2, wood burner
Internet	Yes
Laundry	Internal with main house
Garage	Ground floor 6 car garage, ample storage below with extra rooms including preserving room
Other	Studio attached to home

