



Spec Book – Vandegeest Building LTD –

**21 Streamside Terrace
Villa 11
Silverstream Estates**



**Branches Nationwide
plumbingworld.co.nz**

plumbingworld

HWC

Branches Nationwide
plumbingworld.co.nz

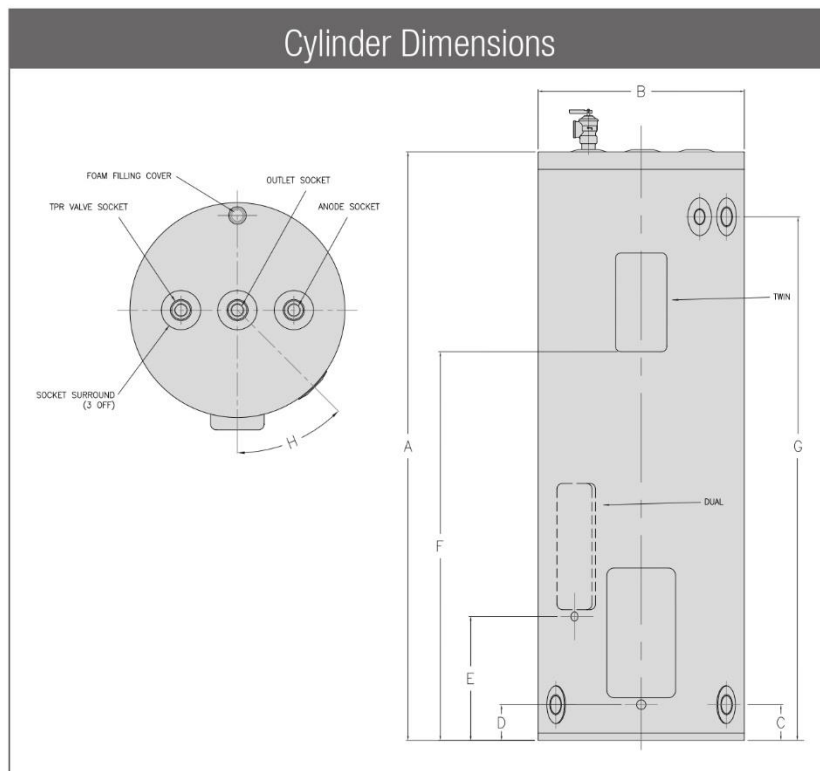
plumbingworld

SPECIFICATIONS

MAINS PRESSURE – VITREOUS ENAMEL (VE)

Product		Models											
Single Element Indoor		31202519V	31204515	31209015	31213513	32213515	31218013		32218015	31225015	31230015		
			31204513	31209013	31213515		31218015						
Twin Element (non-simultaneous) Indoor							31218025			31225025			
Dual Element (simultaneous) Indoor											31230033 31230055		
Optima Outdoor/Indoor								91318015					
Optima Twin Element (non-simultaneous) Outdoor/Indoor												91330025	49240068
Approx. Storage Capacity	Litres	25	45	90	135	135	180	180	180	250	300	300	400
Boost Capacity (Twin Element)	Litres	-	-	-	-	-	45*	-	-	50**	50	47	90
Height	A (mm)	398	525	925	1325	935	1710	1720	1165	1555	1815	1820	1840
Width	B (mm)	400	490	490	490	580	490	490	580	580	580	580	690
	C (mm)	116	120	120	120	120	120	120	120	120	120	120	120
	D (mm)	32	65	65	65	65	65	-	65	65	65	-	105
	E (mm)	-	-	-	-	-	-	-	-	-	162	-	-
	F (mm)	-	-	-	-	-	1182*	-	-	1126**	-	1298	1323
	G (mm)	246	-	-	-	-	-	1546	-	-	-	1636	1479
	H (°)	45	45	45	45	45	45	36	45	45	45	36	97
Approx Weight Empty	Kg	15	26	38	49	54	60-62	64	64	80-82	91	97	113
TPR Valve Setting	kPa	1000	1000	1000	1000	1000	1000	1000	1000	1000	1000	1000	1000
Water Connections		RP ¾ /20	RP ¾ /20	RP ¾ /20	RP ¾ /20	RP ¾ /20	RP ¾ /20	RP ¾ /20	RP ¾ /20	RP ¾ /20	RP ¾ /20	RP ¾ /20	RP ¾ /20
Element Rating (@230V)	KW	2.0	2.0 or 3.0	2.0 or 3.0	2.0 or 3.0	3.0	2.0 or 3.0	3.0	3.0	3.0	3.0 or 5.0	3.0	4.8 [^]

*31218025 only **31225025 only [^] @ 240V



1. Inlet/Outlet and TPR valve are side mounted on left-hand side of 31202519V.
2. Inlet/outlet and TPR valve are side mounted on right-hand side of 91318015 and 91330025.

Specifications Electric (@230V)

kW	Recovery on a 50°C rise	AMPS
2.0 kW	34 litres per hr	8.7 A
2.4 kW	40 litres per hr	10.4 A
3.0 kW	51 litres per hr	13.1 A
3.6 kW	62 litres per hr	15.7 A
4.8 kW	82 litres per hr	21.0 A
5.0 kW	85 litres per hr	21.8 A
6.0 kW	103 litres per hr	26.1 A
2 × 3.0 kW	103 litres per hr	26.2 A
2 × 5.0 kW	171 litres per hr	43.6 A



Bathroom

Branches Nationwide
plumbingworld.co.nz

plumbingworld

Acrylic Bath

Nominal Sizes:

1525mm x 735mm x 438mm

1675mm x 735mm x 438mm

1795mm x 780mm x 480mm



A fresh, simple, contemporary design with integrated armrests for added comfort. Complete with a four tile flange for built-in installation.

Bath also available as spa baths in Immerse and Revive configurations.

1525mm long x 735mm wide x 438mm deep - Standard Code No.MX5

1675mm long x 735mm wide x 438mm deep - Standard Code No.MX7

1795mm long x 780mm wide x 480mm deep - Standard Code No.MX8

Durability: Sanitaryware grade acrylic resists chipping, will not rust and has excellent heat retention properties. Its high gloss finish has natural slip resistance. Minor scratch marks can be removed with gentle metal polishes, such as Brasso.

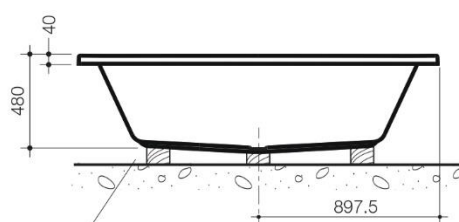
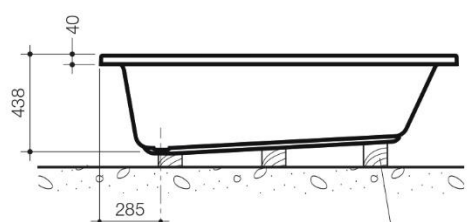
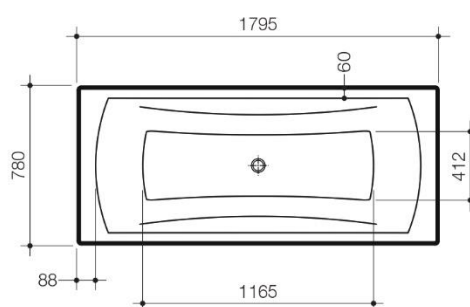
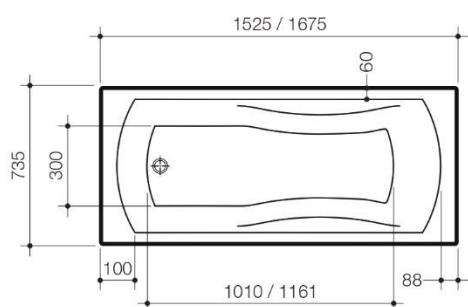
Waste Outlet: Waste outlet is suitable for 40mm diameter standard waste assembly.

Bath Capacity: Maxton 1525 - 230 litres; Maxton 1675 - 260 litres; Maxton 1795 - 330 litres.

Installation: The bath is suitable for both built-in and island installations. The bath is supported around its rim and the base is supported with timber base supports. *Refer to Sheet 9.01.1 for further installation information.*

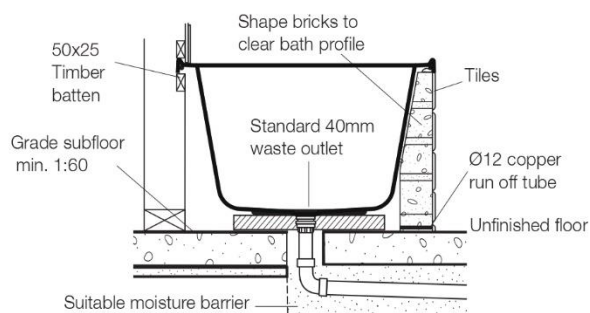
Colour: White only.

Dimensions: All dimensions are in millimetres and are subject to normal manufacturing variations. Caroma pursues a policy of continuing improvement in design and performance of its products. The right is therefore reserved to vary specifications without notice.

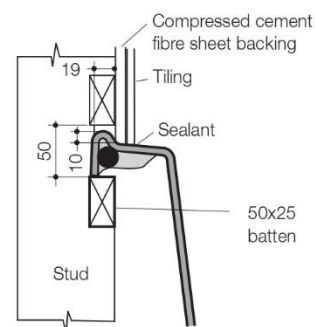


Timber support battens

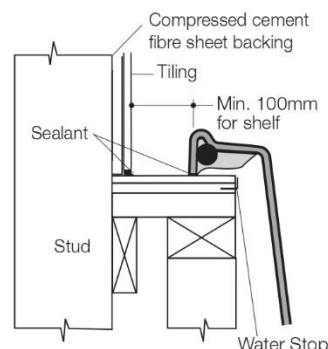
On the indicator lines, position and fix timber supports to base of the bath and floor with an approved floor and wall panelling adhesive or equivalent adhesive to provide a neat fit support. Ensure the rim of the bath is levelled during this procedure.



BUILT-IN INSTALLATION



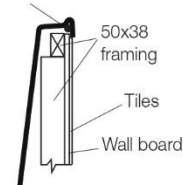
ISLAND INSTALLATION



*** IMPORTANT:**
Refer to Local Authority for minimum setout from wall

TIMBER SUPPORT ALTERNATIVE

Bond inner face of bath to timber frame as detailed with approved floor and wall panelling adhesive

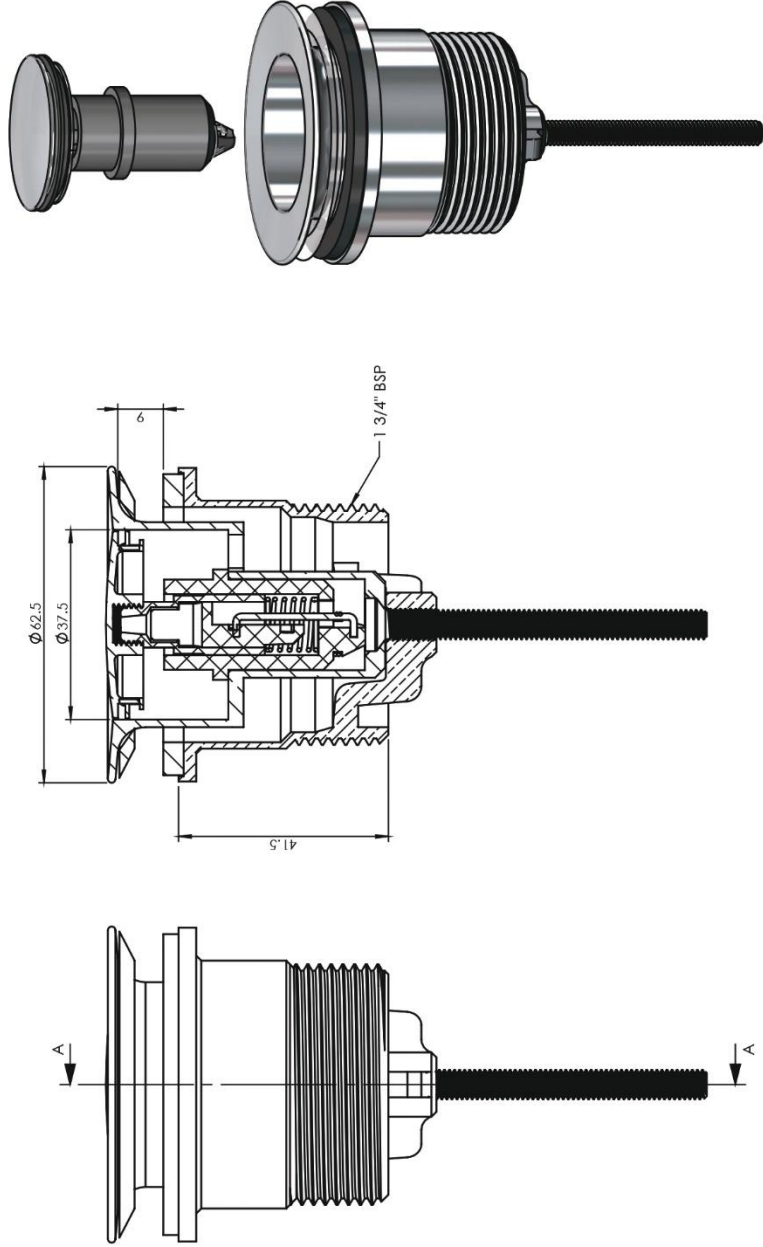




FOUR-IN-ONE™ 32/40mm POP UP PLUG & WASTES

- ✓ Revolutionary self-lubrication / Anti Jam Acetal mechanism
- ✓ Innovative lift out mechanism
- ✓ Easy to clean
- ✓ Universal fit 32/40mm with or without overflow

CODE	OUTLET SIZE	FINISH	CTN QTY
21705.01	40mm	Chrome	50



Available Finishes



.01 Chrome



.04 Polished
Brass



.06 Brushed
Nickel



.23 Brushed
Gold



.25 Matt
Black

Note: .04 Polished Brass (Raw/Living Finish)



ART INTERNATIONAL
PLUMBING & BATHROOMWARE

134 Gilba Road Girraween, NSW 2145
P: 02 9896 7760 | F: 02 9636 2498 | sales@artinternational.com.au
www.artaust.com.au | www.artnz.co.nz



ART PLUMBING PRODUCTS
Innovative Plumbing Fittings

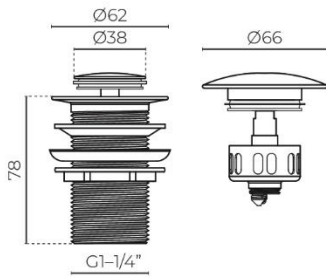


BOUNTY BATHROOMWARE
Designer Bathroom Fittings

WASTE & TRAPS

32mm Pop-Up Waste (Long tail)

LEV PW32 | LEVPUW32BK | LEVPUW32OFBN | LEVPUW32OFGM



MATERIAL: Solid DR brass construction

WIDTH DIAMETER (MM): 62

HEIGHT (MM): 78

TAIL (MM): 80

WARRANTY: 10 years on chrome, 2 years warranty on coloured

FEATURES

- Chrome, electroplated or PVD body & lid
- Unique lift out basket system
- Supplied with large and small lid
- Clear silicone seals
- Spring loaded PU waste
- Chrome, Black (powdercoat), Brushed Nickel (PVD), Gunmetal (PVD)

SPARE PARTS

- LEVWASBAK32 / Spare basket
- LEVPWLID32S / Spare lid – small
- LEVPWLID32L / Spare lid - large
- LEVPWLIDRNG32 / Silicone ring washer
- LEVPWBRSSPRG / Spare pop-up brass waste spring

FINISHES AVAILABLE:



Caroma®

Luna Cleanflush™

Vitreous China 4.5/3 litre Dual Flush Wall Faced
Close-Coupled Rimless Toilet Suite

Revision: 1.0

Date: February 2017

Supersedes all previous issues

3.19.2



cleanflush



Caroma®

Luna Cleanflush™

Vitreous China 4.5/3 litre Dual Flush Wall Faced Close-Coupled Rimless Toilet Suite



Combining a contoured design with rimless pan technology, the **Luna Cleanflush™** is a superior flushing system suitable for domestic and commercial applications. Incorporating several patented technologies: Caroma Flow Splitter™, Caroma Flow Balancer™ and Caroma Uni-Orbital® Connector, the Cleanflush pan is innovative and the next evolution in toilets. The Flow Splitter evenly flows water around the top of the bowl to meet at the Flow Balancer which directs the water powerfully into the sump, reducing the need for brush cleaning. The rimless pan is easy to clean and unlike traditional pan profiles, provides full visibility of any grime build up. Caroma Cleanflush™ provides a cleaner clean for peace of mind.

Pan: **Luna Cleanflush™** wall faced close coupled 4.5 litre full flush rimless pan.

Traps: Universal trap for S or P-trap installations.

Cisterns: **Universal** close coupled cistern – has a free fitting lid and is suitable for domestic and light commercial applications. Available with internal overflow. Available in either back entry or bottom inlet options.

Cistern inlet stop valve and inlet connection is concealed within the cistern and is included (back entry version only). **Vandal Resistant Conversion Kit** – A simple to install conversion is available for the standard mechanism to lock lid onto the cistern, recommended for use in heavy use commercial areas. Code No.750109.

Important: Working pressure minimum 30kPa to maximum 1000kPa flow pressure. Rain water tank compliant. Accurate wall setout for B.S.P. 1/2" Nipple water inlet connection is essential.

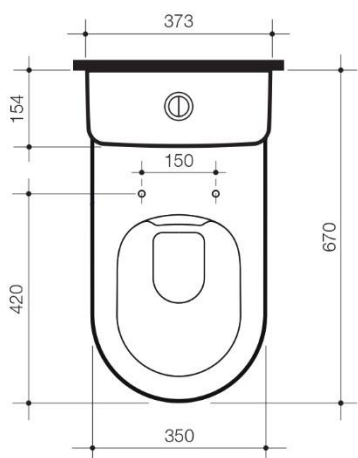
Fixing: The cistern is fixed directly to the pan with a robust concealed base fixing system without the need for wall fixing.

Seats: The **Xena** soft close quick release thermoset toilet seat is provided as standard with the Urbane Cleanflush™ suite. See chapter 5.01 SEATS of the Caroma Technical Manual for further details.

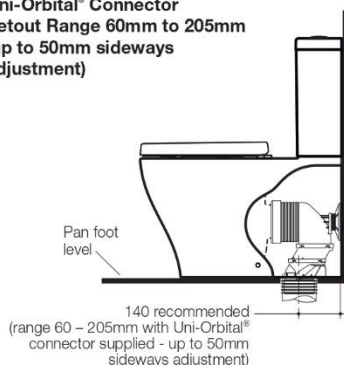
Colours: White only.

Installation: The installation of the toilet suite shall be in accordance with the normal minimum drainline grade requirements in AS/NZS 3500.2.

Dimensions: All dimensions are in millimetres and are subject to normal manufacturing variations. Caroma pursues a policy of continuing improvement in design and performance of its products. The right is therefore reserved to vary specifications without notice.

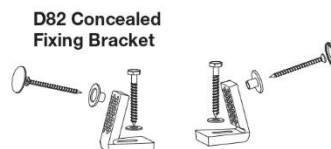
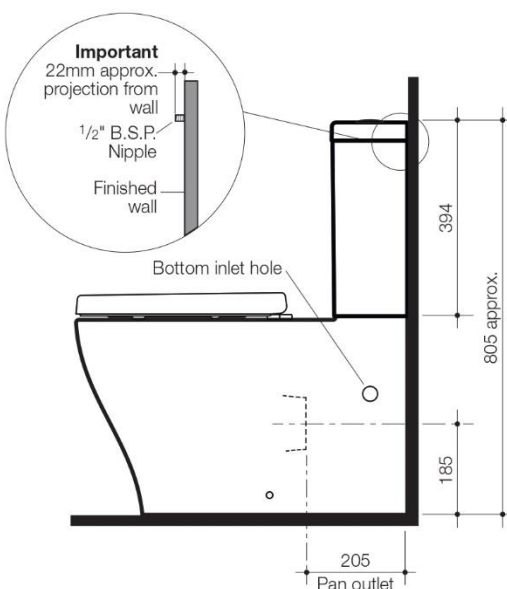
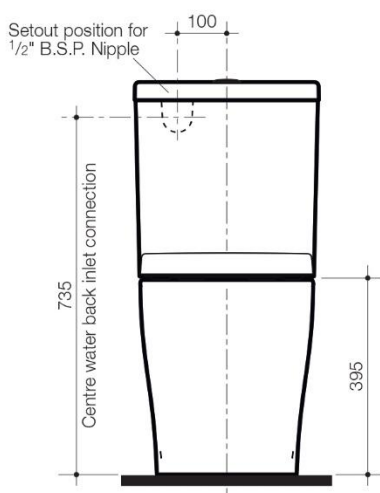
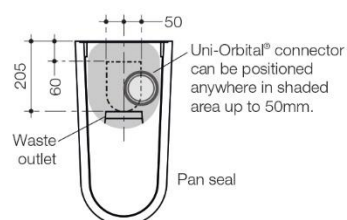


Uni-Orbital® Connector
Setout Range 60mm to 205mm
(up to 50mm sideways
adjustment)



**Luna Cleanflush™ Wall Faced
Close Coupled Toilet Suite with
Xena Soft Close Seat**

	Code No.
4.5/3 litre Bottom Inlet Internal Overflow	844810
4.5/3 litre Back Entry Internal Overflow	844820



Note: All height dimensions to underside of pan, make allowance for bedding when installing.

Bedding: The pan should be fixed to the floor with a sand cement mixture of 3:1 to a depth of 60mm. Do not use lime or fast drying cement in the bedding mixture. When bedded the back of the foot of the pan should be approximately 10mm above the finished floor.

Bracket fixing: The pan should be bedded with an acetic cured silicone sealant and fixed with the D82 Fixing Brackets supplied.

ASPEN

Toilet Roll Holder

LEVP02OSS

Features:

- Modern round design
- Solid construction

Specifications:

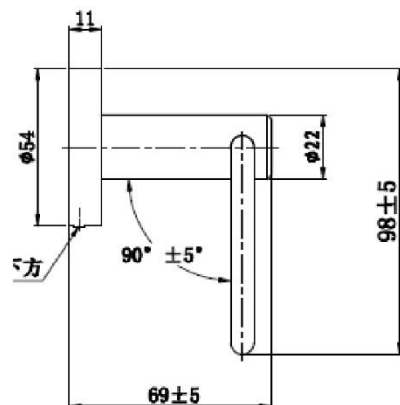
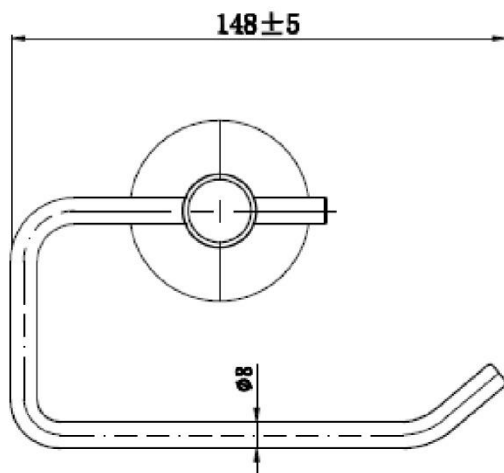
- Polished stainless steel construction

Colour:

- Stainless Steel

Warranty:

- 7 years



ACCESSORIES, WASTES AND TAPWARE NOT INCLUDED UNLESS STATED. PLEASE NOTE MEASUREMENTS ARE NOMINAL ONLY. PLEASE MEASURE PRODUCT ON SITE

Savoy 50

1Dr Wall 900

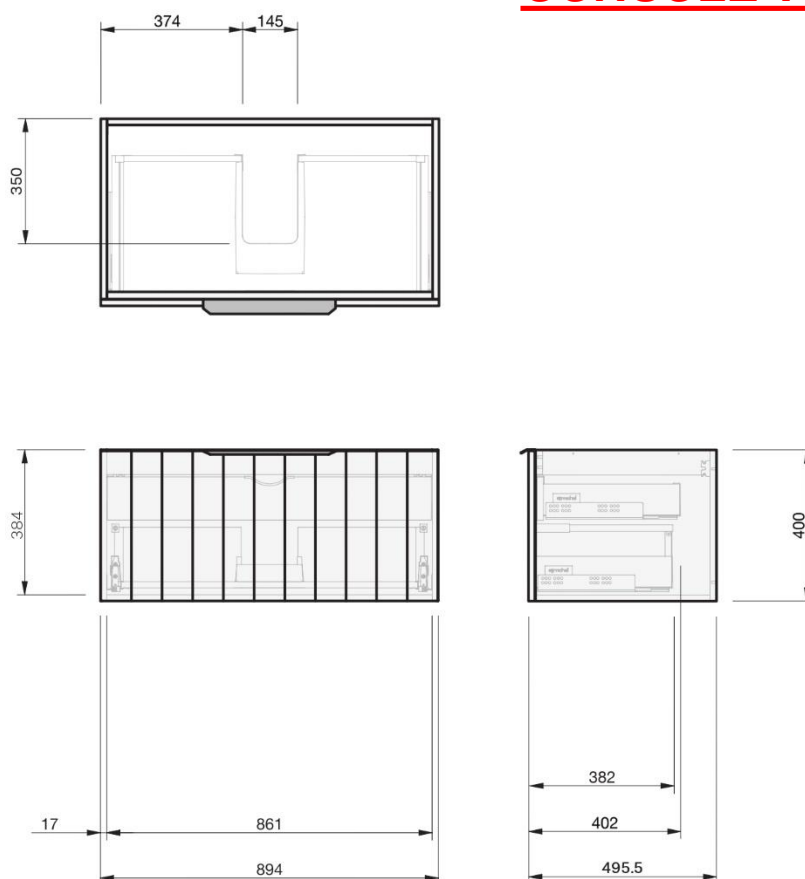
CABINET SPECIFICATION



Product Features

Product Code	Console Vanity / 9002 Benchtop Vanity / 9002BT Benchtop Vanity + Concealed Drawer / 9003BT
Product Description	Savoy - Wall - 900
Drawer Configuration	1 Drawer
Notes	Drawings depict cabinet only and display all concealed drawers. Plumbing positioning still applies if your cabinet code is listed in this document and your concealed drawer configuration differs from image shown.

NO INTERNAL DRAW FOR CONSOLE TOP OPTION



IMPORTANT NOTE: Throughout this guide, dimensions may vary by ± 2 mm. Please read the installation manual for detailed information on installing the product. St. Michel pursues a policy of continuing improvement in design and manufacturing of its products. The right is therefore reserved to vary specifications without notice.

st.michel
BATHROOMWARE

phone (09) 837 4276 email info@stmichel.co.nz stmichel.co.nz

Lauretta 900

BASIN SPECIFICATION



Product Features

Product Code	2161
Type of basin	Console
Material of basin	Mineral Cast
Capacity of basin	8.5 litre
Overflow Configuration	Overflow supplied Max tap flow rate of 15 ltrs / minute
Colour options	White Gloss

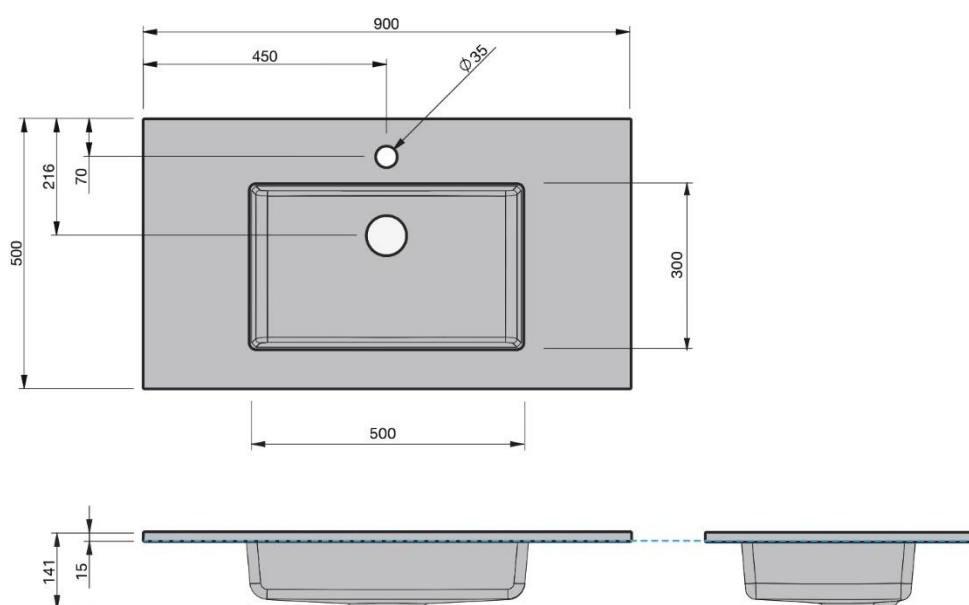
- The basin must be sealed to the top with an acetic cured silicone sealant.
- Epoxy type sealants must not be used.

Cabinet range (refer to applicable cabinet specifications)



SAVOY 50

INDICATES TOP SURFACE -----



IMPORTANT NOTE: Throughout this guide, dimensions may vary by ± 2 mm. Please read the installation manual for detailed information on installing the product. St. Michel pursues a policy of continuing improvement in design and manufacturing of its products. The right is therefore reserved to vary specifications without notice.

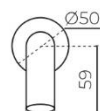
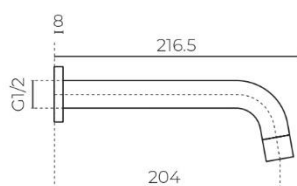
st.michel
BATHROOMWARE

phone (09) 837 4276 email info@stmichel.co.nz stmichel.co.nz

SLIM

Bath Spout

LEV25BSSS | LEV25BSBK



CONSTRUCTION: Stainless steel
PRESSURE: Mains pressure
WORKING PRESSURE (KPA): 150–1000
RECOMMENDED WORKING PRESSURE (KPA): 500
BASE HEIGHT (MM): 50
LENGTH (MM): 216.5
WARRANTY: Lifetime on stainless steel, 5 years on coloured
LEAD FREE: Yes

FEATURES

- Minimalist design
- Lead free stainless steel body

FINISHES AVAILABLE:



Brushed
Stainless Steel
Code: SS



PVD Vapour
Black
Code: BK

SPOUT OPTION 2

ASPEN

Round Bath Spout

LEVASPBSTSS | LEVASPBSTGM

Features:

- Solid brushed stainless steel
- Functional design

Specifications:

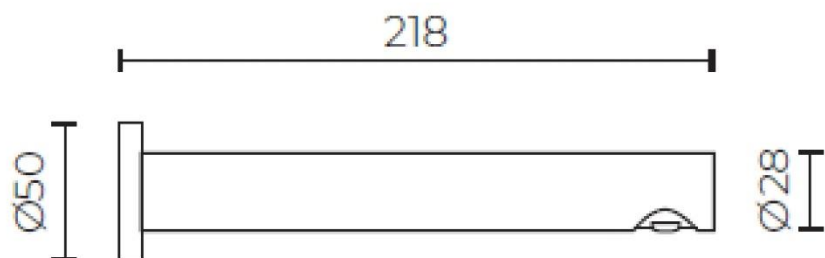
- 304 Stainless Steel
- 220mm long
- All pressure

Colour:

- Stainless Steel or Gunmetal

Warranty:

- Lifetime warranty on SS
- 5 years on gunmetal

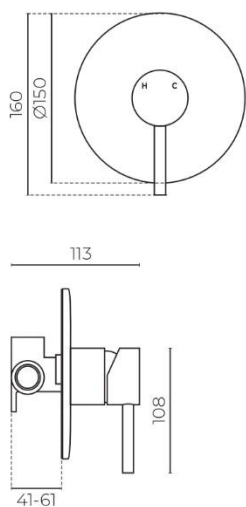


ACCESSORIES, WASTES AND TAPWARE NOT INCLUDED UNLESS STATED. PLEASE NOTE MEASUREMENTS ARE NOMINAL ONLY. PLEASE MEASURE PRODUCT ON SITE

ASPEN

Shower Mixer

LEV115261CSS | LEV115261CGM



CONSTRUCTION: Solid brushed stainless steel

PRESSURE: Mains pressure

WORKING PRESSURE (KPA): 150-1000

RECOMMENDED WORKING PRESSURE (KPA): 500

HEIGHT (MM): 160

WIDTH (MM): 113

WATER CONSUMPTION (L/MIN): 5.13

WELS RATING: 5 star rated

WARRANTY: Lifetime on stainless steel, 5 years on PVD gunmetal finish, 5 years on cartridge, 1 year on non-residential applications

FEATURES

- Minimalist design
- Ceramic cartridge technology
- Lead free body

SPARE PARTS

- LEVY150500123 / 40mm Cartridge
- LEVY150402155SS / Stainless steel handle
- LEVY150402155GM / Gunmetal handle

FINISHES AVAILABLE:



Brushed
Stainless Steel
Code: SS



Gunmetal
Code: GM

ASPEN

Single Lever Basin Mixer

LEVPF1071SS | LEVPF1071GM

Features:

- Solid brushed stainless steel
- Lead free body
- Ceramic cartridge technology
- Functional design
- Mains pressure

Specifications:

- 304 Stainless Steel
- 35mm cartridge (WMKA25232)
- 5-Star WELS rating (Av flow 5.13L/Min)
- Min working pressure (150kPa)
- Max working pressure (1000kPa)
- Recommended working pressure (500kPa) as per AS/NZS3500 (Fitted with PLV)

Spare Parts:

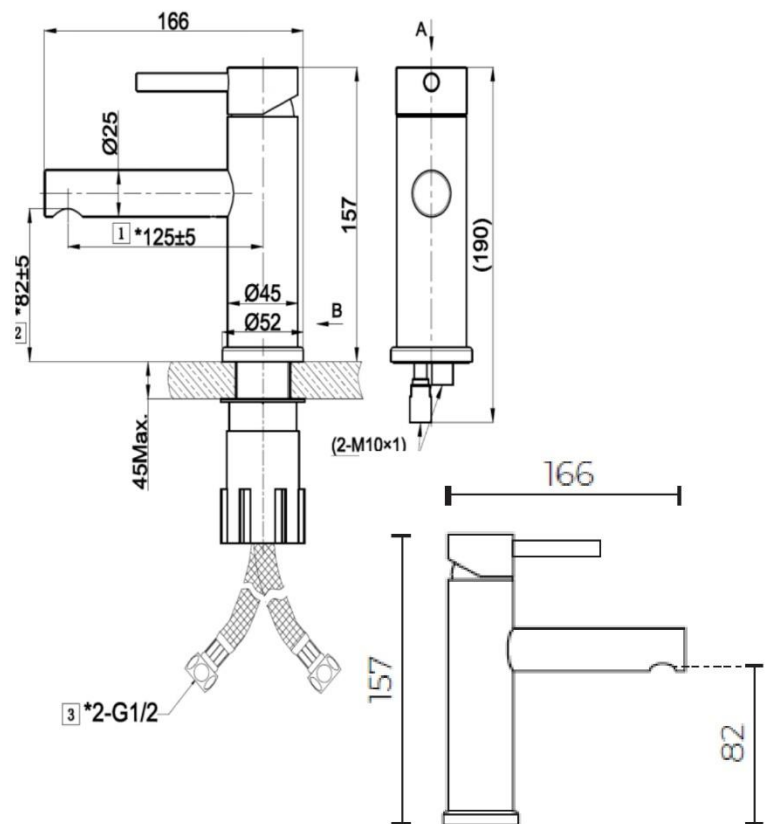
- LEVY150500130 (Cartridge)

Colour:

- Stainless Steel or Gunmetal

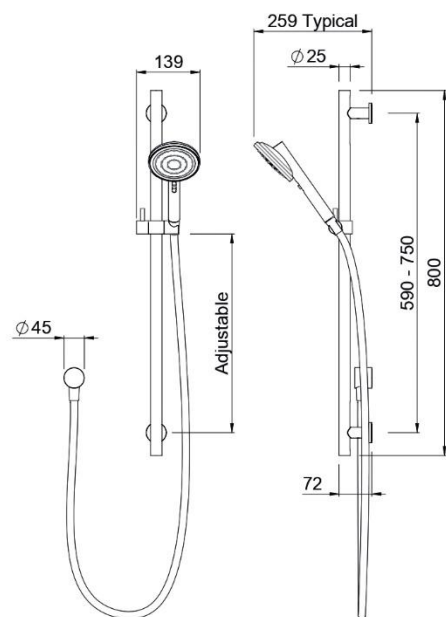
Warranty:

- Lifetime warranty on Stainless Steel
- 5 years warranty on Gunmetal (PVD)
- 5 years warranty on cartridge



ACCESSORIES, WASTES AND TAPWARE NOT INCLUDED UNLESS STATED. PLEASE NOTE MEASUREMENTS ARE NOMINAL ONLY. PLEASE MEASURE PRODUCT ON SITE

VJet™ TŪROA RAIL SHOWER



VJet™ puts the shower experience in your control. Two waterways converge in a chamber behind each nozzle to create a spinning vortex that seamlessly changes speed as you adjust the slider. Resulting in a smooth transition from a firm invigorating spray, to a gentle spray, and everything in between - uniquely tailored by you.

CONSTRUCTION: Stainless steel and plastic

CLASSIFICATION: Suitable for **mains/high pressure** only

INLET CONNECTIONS: 1/2" BSP female

OUTLET CONNECTION: N/A

WORKING PRESSURES: 100 - 500kPa

DIMENSIONS FOR FITTING: 590-750mm

OPERATING TEMPERATURE: 5 °C - 65 °C

WATER FLOW RATE: approx 8.5L/min

- Variable spray
- Water efficient
- Modern aesthetic
- Wide coverage
- Easy to clean
- Twist-free hose
- Flexible rail installation
- 3 star WELS rated on mains pressure (9.0 L/min)

TUSRSSWH

Stainless Steel & White

<https://www.methven.com/nz/vjet-turoa-rail-shower>

Heated Towel Rails

Jersey Round 6 BAR

Product Code

ER6 | ER6 BLACK | ER6 BSS
ER6 GM | ER6 BRASS

Dimensions (mm)

600(w) x 780(h) x 120(d)mm

Width Centres 565mm

Vertical Centres 580mm



POLISHED ER6

**Finishes: Beautiful and highly durable
palette of exquisite finishes**

(Polished Stainless/Black/Brushed Stainless/Brushed Gunmetal/Brushed Brass)



BLACK
ER6 BLACK



BRUSHED SS
ER6 BSS



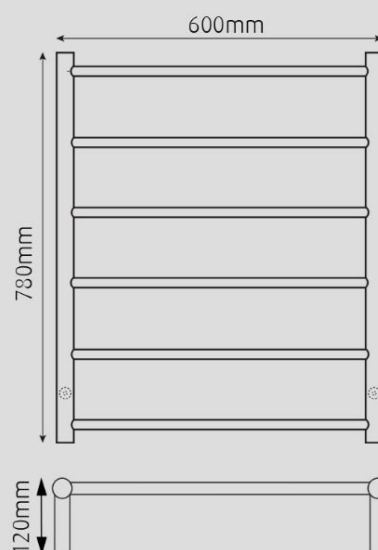
BRUSHED GUNMETAL
ER6 GM



BRUSHED BRASS
ER6 BRASS

Features

- 6 bars
- Dual wired-can connect from LH or RH bottom leg
- Concealed wiring kit included
- All fixing accessories included
- 60watts, 230-240 Volts, 50 Hz single phase
- Class 1 appliance - requires an earth connection
- Ingress Protection Rating - IP45 Splashproof



Notes : Wiring connection is either LH or RH bottom leg and can be a concealed or exposed connection. It should be positioned at least 600mm above the floor.

Ensuite

Branches Nationwide
plumbingworld.co.nz

plumbingworld

Savoy 50

1Dr Wall 900

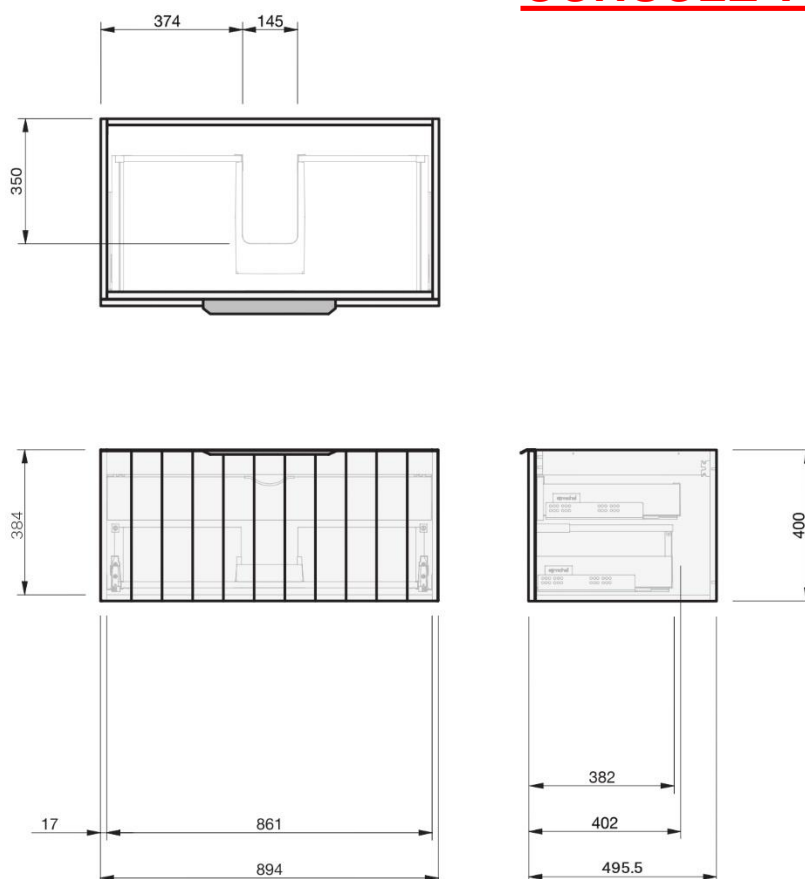
CABINET SPECIFICATION



Product Features

Product Code	Console Vanity / 9002 Benchtop Vanity / 9002BT Benchtop Vanity + Concealed Drawer / 9003BT
Product Description	Savoy - Wall - 900
Drawer Configuration	1 Drawer
Notes	Drawings depict cabinet only and display all concealed drawers. Plumbing positioning still applies if your cabinet code is listed in this document and your concealed drawer configuration differs from image shown.

NO INTERNAL DRAW FOR CONSOLE TOP OPTION



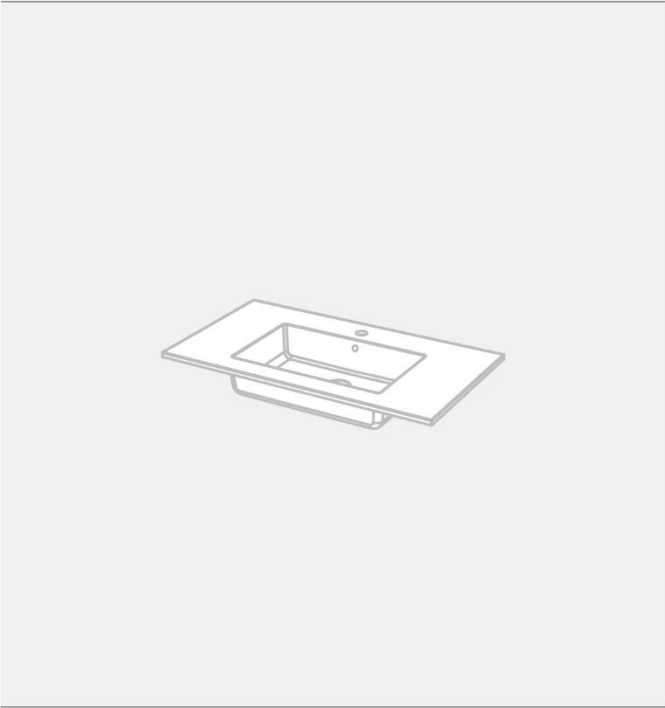
IMPORTANT NOTE: Throughout this guide, dimensions may vary by ± 2 mm. Please read the installation manual for detailed information on installing the product. St. Michel pursues a policy of continuing improvement in design and manufacturing of its products. The right is therefore reserved to vary specifications without notice.

st.michel
BATHROOMWARE

phone (09) 837 4276 email info@stmichel.co.nz stmichel.co.nz

Lauretta 900

BASIN SPECIFICATION



Product Features	
Product Code	2161
Type of basin	Console
Material of basin	Mineral Cast
Capacity of basin	8.5 litre
Overflow Configuration	Overflow supplied Max tap flow rate of 15 ltrs / minute
Colour options	White Gloss

- The basin must be sealed to the top with an acetic cured silicone sealant.
- Epoxy type sealants must not be used.

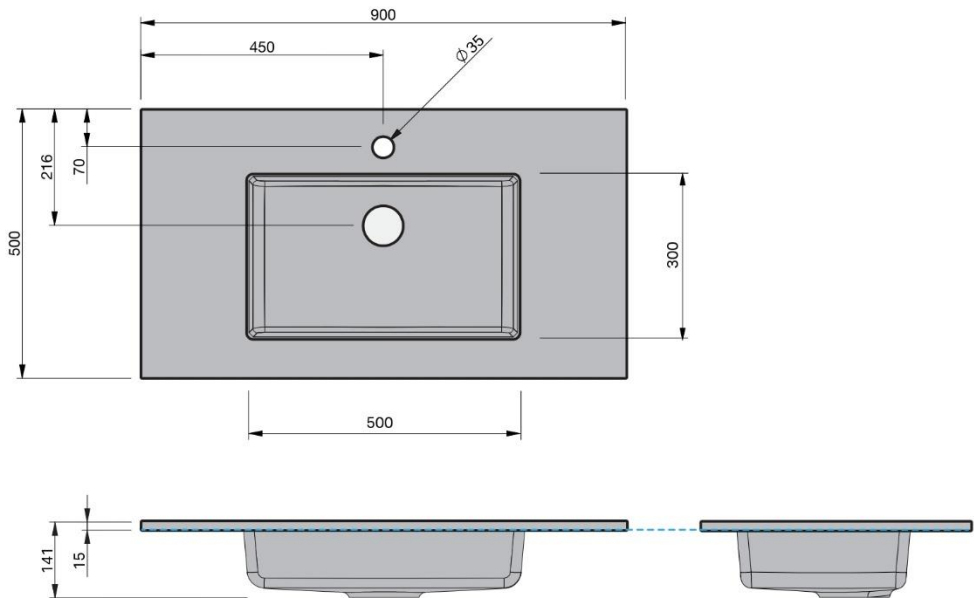
Cabinet range (refer to applicable cabinet specifications)



SAVOY 50



INDICATES TOP SURFACE -----



IMPORTANT NOTE: Throughout this guide, dimensions may vary by ± 2mm. Please read the installation manual for detailed information on installing the product. St. Michel pursues a policy of continuing improvement in design and manufacturing of its products. The right is therefore reserved to vary specifications without notice.

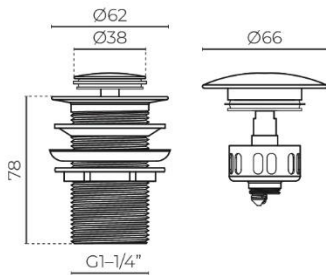
st.michel
BATHROOMWARE

phone (09) 837 4276 email info@stmichel.co.nz stmichel.co.nz

WASTE & TRAPS

32mm Pop-Up Waste (Long tail)

LEV PW32 | LEVPUW32BK | LEVPUW32OFBN | LEVPUW32OFGM



MATERIAL: Solid DR brass construction

WIDTH DIAMETER (MM): 62

HEIGHT (MM): 78

TAIL (MM): 80

WARRANTY: 10 years on chrome, 2 years warranty on coloured

FEATURES

- Chrome, electroplated or PVD body & lid
- Unique lift out basket system
- Supplied with large and small lid
- Clear silicone seals
- Spring loaded PU waste
- Chrome, Black (powdercoat), Brushed Nickel (PVD), Gunmetal (PVD)

SPARE PARTS

- LEVWASBAK32 / Spare basket
- LEVPWLID32S / Spare lid – small
- LEVPWLID32L / Spare lid - large
- LEVPWLIDRNG32 / Silicone ring washer
- LEVPWBRSSPRG / Spare pop-up brass waste spring

FINISHES AVAILABLE:



ASPEN

Single Lever Basin Mixer

LEVPF1071SS | LEVPF1071GM

Features:

- Solid brushed stainless steel
- Lead free body
- Ceramic cartridge technology
- Functional design
- Mains pressure

Specifications:

- 304 Stainless Steel
- 35mm cartridge (WMKA25232)
- 5-Star WELS rating (Av flow 5.13L/Min)
- Min working pressure (150kPa)
- Max working pressure (1000kPa)
- Recommended working pressure (500kPa) as per AS/NZS3500 (Fitted with PLV)

Spare Parts:

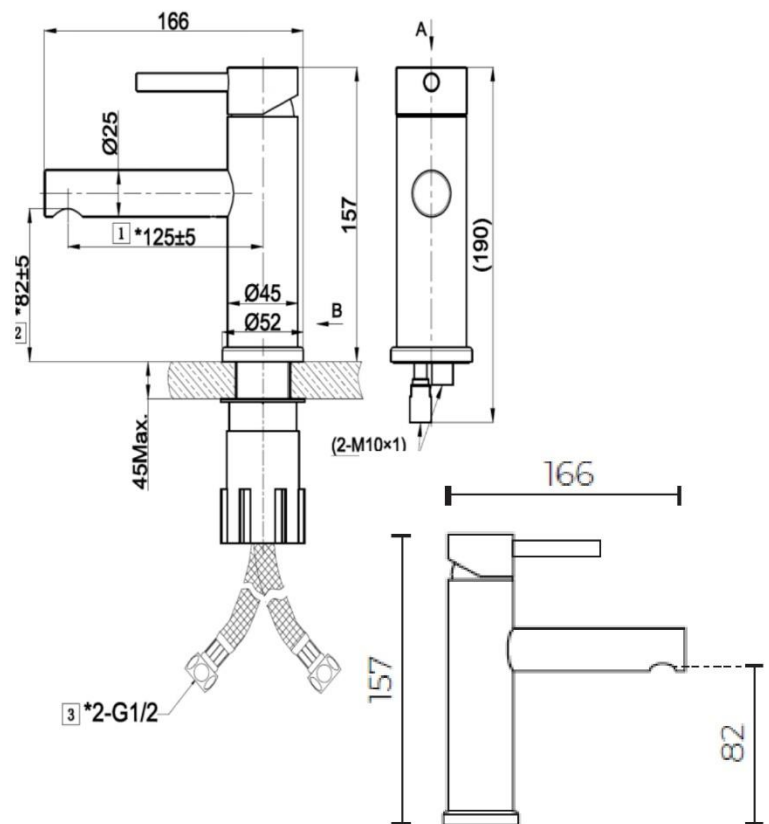
- LEVY150500130 (Cartridge)

Colour:

- Stainless Steel or Gunmetal

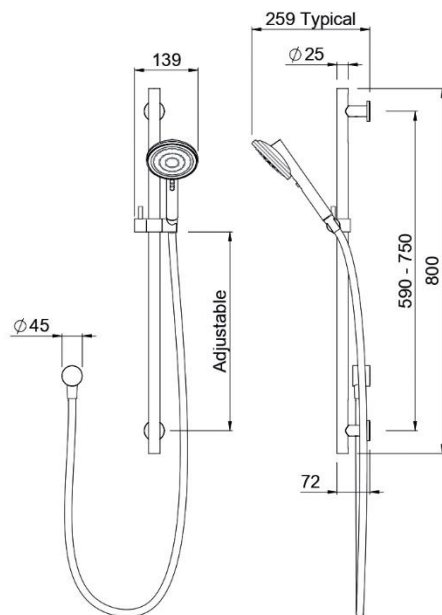
Warranty:

- Lifetime warranty on Stainless Steel
- 5 years warranty on Gunmetal (PVD)
- 5 years warranty on cartridge



ACCESSORIES, WASTES AND TAPWARE NOT INCLUDED UNLESS STATED. PLEASE NOTE MEASUREMENTS ARE NOMINAL ONLY. PLEASE MEASURE PRODUCT ON SITE

VJet™ TŪROA RAIL SHOWER



VJet™ puts the shower experience in your control. Two waterways converge in a chamber behind each nozzle to create a spinning vortex that seamlessly changes speed as you adjust the slider. Resulting in a smooth transition from a firm invigorating spray, to a gentle spray, and everything in between - uniquely tailored by you.

CONSTRUCTION: Stainless steel and plastic

CLASSIFICATION: Suitable for **mains/high pressure** only

INLET CONNECTIONS: 1/2" BSP female

OUTLET CONNECTION: N/A

WORKING PRESSURES: 100 - 500kPa

DIMENSIONS FOR FITTING: 590-750mm

OPERATING TEMPERATURE: 5 °C - 65 °C

WATER FLOW RATE: approx 8.5L/min

- Variable spray
- Water efficient
- Modern aesthetic
- Wide coverage
- Easy to clean
- Twist-free hose
- Flexible rail installation
- 3 star WELS rated on mains pressure (9.0 L/min)

TUSRSSWH

Stainless Steel & White

<https://www.methven.com/nz/vjet-turoa-rail-shower>

LEVLEDMIR75RND

Please note, accessories, wastes, overflows and tapware are not included unless stated. All measurements are nominal only, please measure product on site before installation. Actual colours may vary.

Caroma®

Luna Cleanflush™

Vitreous China 4.5/3 litre Dual Flush Wall Faced
Close-Coupled Rimless Toilet Suite

Revision: 1.0

Date: February 2017

Supersedes all previous issues

3.19.2



cleanflush



Caroma®

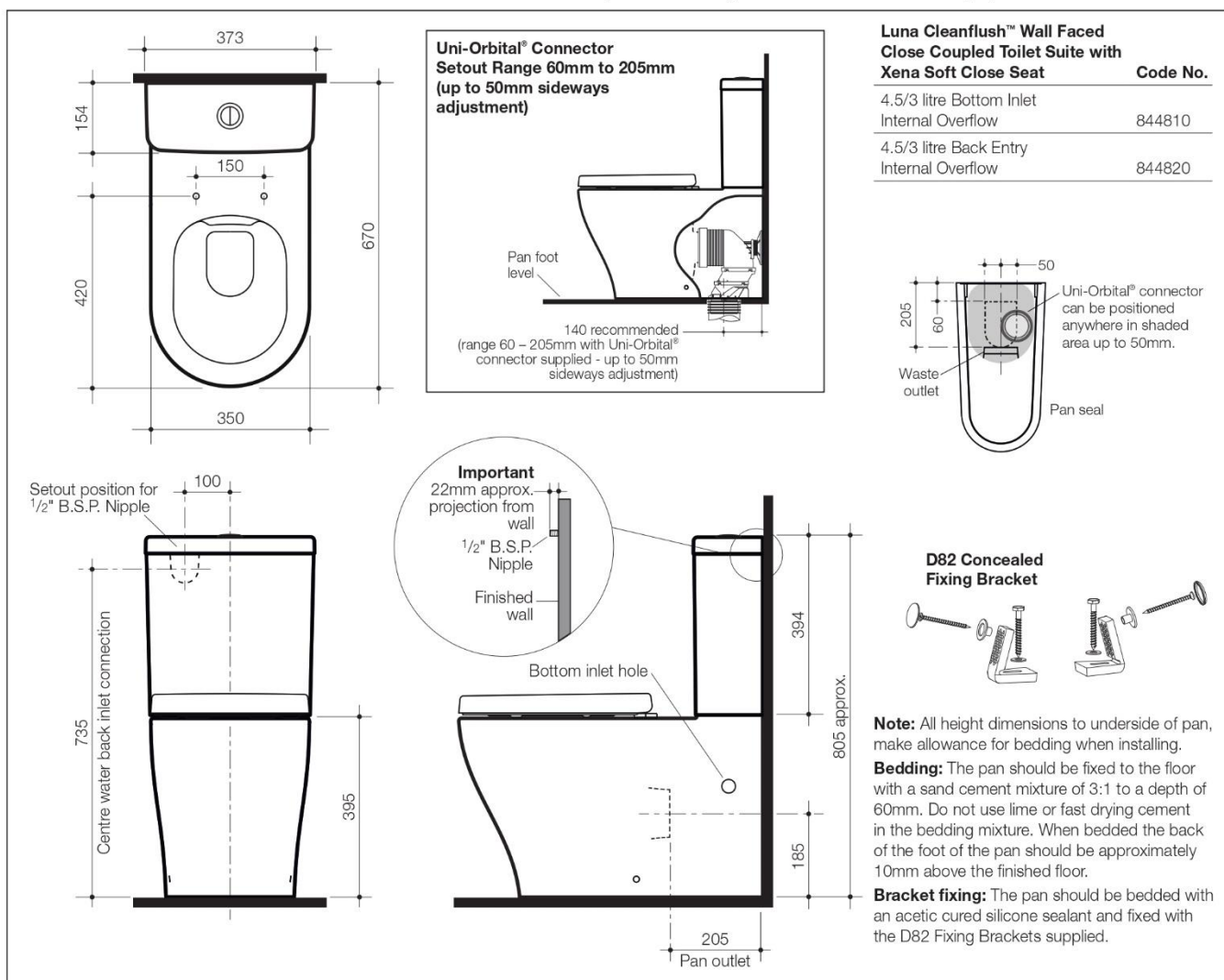
Luna Cleanflush™

Vitreous China 4.5/3 litre Dual Flush Wall Faced Close-Coupled Rimless Toilet Suite



Combining a contoured design with rimless pan technology, the **Luna Cleanflush™** is a superior flushing system suitable for domestic and commercial applications. Incorporating several patented technologies: Caroma Flow Splitter™, Caroma Flow Balancer™ and Caroma Uni-Orbital® Connector, the Cleanflush pan is innovative and the next evolution in toilets. The Flow Splitter evenly flows water around the top of the bowl to meet at the Flow Balancer which directs the water powerfully into the sump, reducing the need for brush cleaning. The rimless pan is easy to clean and unlike traditional pan profiles, provides full visibility of any grime build up. Caroma Cleanflush™ provides a cleaner clean for peace of mind.

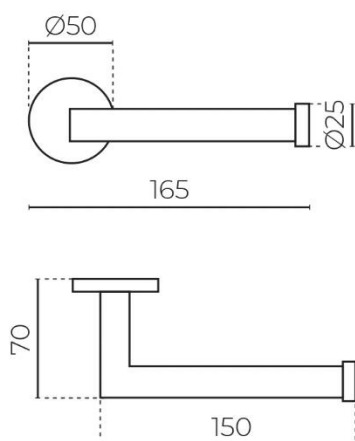
- Pan:** **Luna Cleanflush™** wall faced close coupled 4.5 litre full flush rimless pan.
- Traps:** Universal trap for S or P-trap installations.
- Cisterns:** **Universal** close coupled cistern – has a free fitting lid and is suitable for domestic and light commercial applications. Available with internal overflow. Available in either back entry or bottom inlet options.
Cistern inlet stop valve and inlet connection is concealed within the cistern and is included (back entry version only). **Vandal Resistant Conversion Kit** – A simple to install conversion is available for the standard mechanism to lock lid onto the cistern, recommended for use in heavy use commercial areas. Code No.750109.
Important: Working pressure minimum 30kPa to maximum 1000kPa flow pressure. Rain water tank compliant. Accurate wall setout for B.S.P. 1/2" Nipple water inlet connection is essential.
- Fixing:** The cistern is fixed directly to the pan with a robust concealed base fixing system without the need for wall fixing.
- Seats:** The **Xena** soft close quick release thermoset toilet seat is provided as standard with the Urbane Cleanflush™ suite. See chapter 5.01 SEATS of the Caroma Technical Manual for further details.
- Colours:** White only.
- Installation:** The installation of the toilet suite shall be in accordance with the normal minimum drainline grade requirements in AS/NZS 3500.2.
- Dimensions:** All dimensions are in millimetres and are subject to normal manufacturing variations. Caroma pursues a policy of continuing improvement in design and performance of its products. The right is therefore reserved to vary specifications without notice.



KACIA

Toilet Roll Holder

LEVKATRHBK | LEVKATRHCP | LEVKATRHBN | LEVKATRHGM



MATERIAL: Solid brass construction

WIDTH (MM): 165

DEPTH (MM): 70

BAR DIAMETER (MM): 25

BASE DIAMETER (MM): 50

WARRANTY: 10 years warranty on chrome & 2 years warranty on black powder coated finish

FEATURES

- Minimalist round design
- Dual fixing point
- Chrome, Black (powdercoat), Brushed Nickel (PVD), Gunmetal (PVD)

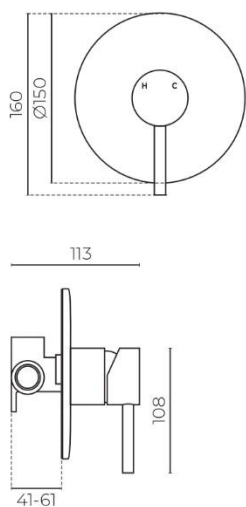
FINISHES AVAILABLE:



ASPEN

Shower Mixer

LEV115261CSS | LEV115261CGM



CONSTRUCTION: Solid brushed stainless steel

PRESSURE: Mains pressure

WORKING PRESSURE (KPA): 150-1000

RECOMMENDED WORKING PRESSURE (KPA): 500

HEIGHT (MM): 160

WIDTH (MM): 113

WATER CONSUMPTION (L/MIN): 5.13

WELS RATING: 5 star rated

WARRANTY: Lifetime on stainless steel, 5 years on PVD gunmetal finish, 5 years on cartridge, 1 year on non-residential applications

FEATURES

- Minimalist design
- Ceramic cartridge technology
- Lead free body

SPARE PARTS

- LEVY150500123 / 40mm Cartridge
- LEVY150402155SS / Stainless steel handle
- LEVY150402155GM / Gunmetal handle

FINISHES AVAILABLE:



Brushed
Stainless Steel
Code: SS



Gunmetal
Code: GM

Heated Towel Rails

Jersey Round 6 BAR

Product Code

ER6 | ER6 BLACK | ER6 BSS
ER6 GM | ER6 BRASS

Dimensions (mm)

600(w) x 780(h) x 120(d)mm

Width Centres 565mm

Vertical Centres 580mm



POLISHED ER6

**Finishes: Beautiful and highly durable
palette of exquisite finishes**

(Polished Stainless/Black/Brushed Stainless/Brushed Gunmetal/Brushed Brass)



BLACK
ER6 BLACK



BRUSHED SS
ER6 BSS



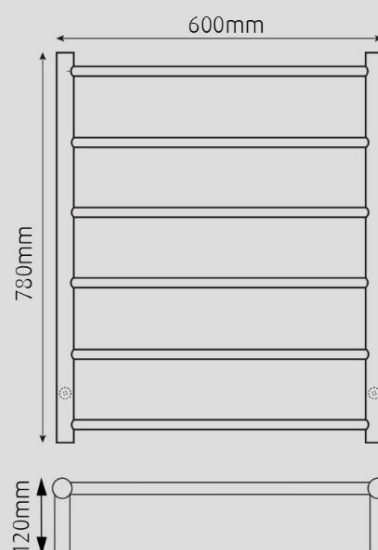
BRUSHED GUNMETAL
ER6 GM



BRUSHED BRASS
ER6 BRASS

Features

- 6 bars
- Dual wired-can connect from LH or RH bottom leg
- Concealed wiring kit included
- All fixing accessories included
- 60watts, 230-240 Volts, 50 Hz single phase
- Class 1 appliance - requires an earth connection
- Ingress Protection Rating - IP45 Splashproof



Notes : Wiring connection is either LH or RH bottom leg and can be a concealed or exposed connection. It should be positioned at least 600mm above the floor.

Kitchen

Branches Nationwide
plumbingworld.co.nz

plumbingworld

LE·VIVI

TECHNICAL DATA SHEET

ASPEN

Single Lever Sink Mixer with Adjustable Spray Head (Mains Pressure)

LEVPF7505SS

Features:

- Solid brushed Stainless Steel
- Lead free body
- Ceramic cartridge technology
- Adjustable spray head
- Option of black or white cover
- Mains pressure

Specifications:

- 304 Stainless Steel
- 35mm cartridge (WMKA25232)
- 5-Star WELS rating (Av flow 5.67l/ min)
- Min working pressure (150KPA)
- Max working pressure (1000kpa)
- Recommended working pressure (500kpa) as per AS/NZS3500 (fitted with PLV)

Spare Parts:

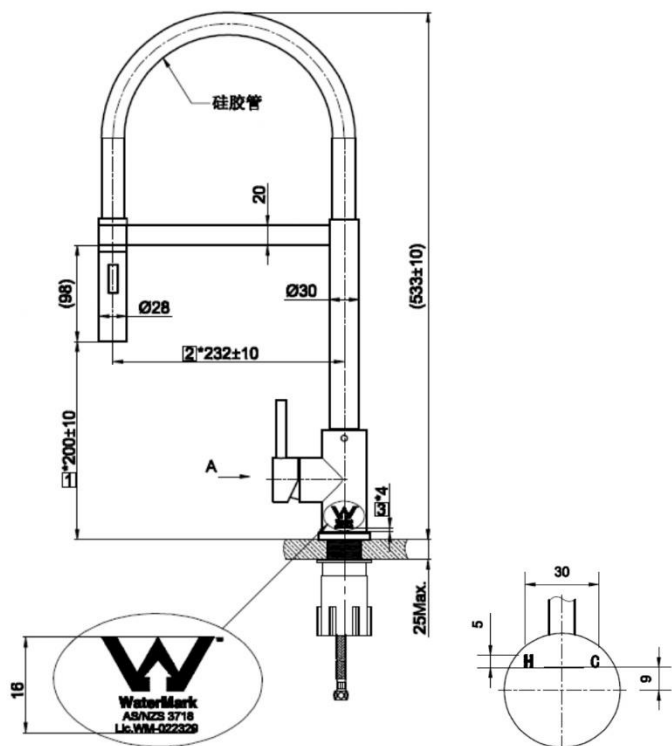
- LEVY150500130 (Cartridge)

Colour:

- Stainless Steel

Warranty:

- Lifetime warranty on tap body
- 5 year on cartridge



ACCESSORIES, WASTES AND TAPWARE NOT INCLUDED UNLESS STATED. PLEASE NOTE MEASUREMENTS ARE NOMINAL ONLY. PLEASE MEASURE PRODUCT ON SITE

Laundry

Branches Nationwide
plumbingworld.co.nz

plumbingworld

ASPEN

Sink Mixer with Gooseneck

LEVPF7107MSS | LEVPF7107MGM

Features:

- Solid brushed stainless steel
- Gunmetal PVD finish (LEVPF7107MGM only)
- Lead free body
- Ceramic cartridge technology
- Minimalist design
- Mains pressure

Specifications:

- 304 Stainless Steel
- 35mm cartridge (WMKA25232)
- 5-Star WELS rating (Av flow 5.39L/Min)
- Min working pressure (150kPa)
- Max working pressure (1000kPa)
- Recommended working pressure (500kPa) as per AS/NZS3500 (fitted with PLV)
- 35mm hole required in benchtop

Spare Parts:

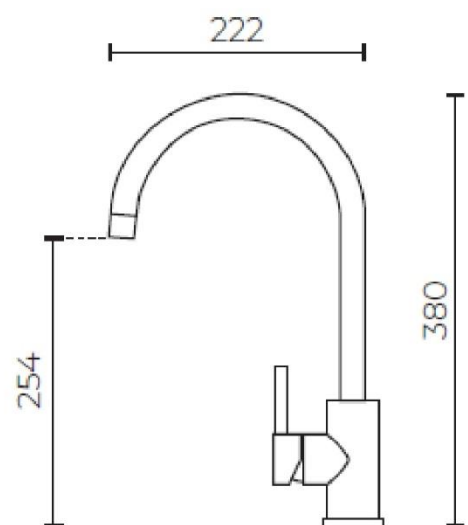
- LEVY150500130 (Cartridge)
- LEVY150301605 (100mm extended thread)

Colour:

- Stainless Steel or Gunmetal

Warranty:

- Lifetime warranty on Stainless Steel
- 5 years on PVD (Gunmetal) finish
- 5 years on cartridge



ACCESSORIES, WASTES AND TAPWARE NOT INCLUDED UNLESS STATED. PLEASE NOTE MEASUREMENTS ARE NOMINAL ONLY. PLEASE MEASURE PRODUCT ON SITE