

56 Waihi Road, Hawera

3 1 1

Floor/Land Size

Floor: 128m2 (+/-)

Land: 683m2 (+/-)

Buyers \$439,000+

Feel right at home - double glazed!

View the 3D Matterport Tour at this link: my.matterport.com/show/?m=MnipB31XaUg

Step through the gate and be prepared to feel very happy in Hawera that you've found this charming character home that has been carefully renovated inside and out to bring it to its best. Everything you would want in a 1920s vintage has been retained with the covered front porch and cloak hanger entrance, leading to wooden floor hallway connecting a separate sitting lounge and the three bedrooms. The front bedrooms are double size with a decent single further down, and the work has been all been done on the amenities. The bathroom is modern tiled with a monsoon head shower, toilet, separate bath and vanity sink, along with heater light and extractor fan. An artful vinyl floor has been laid in the kitchen with plenty of serving and shelf space around the stove and extractor fan, while washing up or food prep in the deep sink will be a breeze, with an open plan dining layout. For convenience in a family home, out the back porch you will find a separate toilet, alongside the laundry area with tub, washing machine taps and space for extra appliances like drinks fridge or freezer. For the green thumbs, the backyard is now a hosting pleasure with hedges, seating areas, patio, tool shed and stone paths – with the carport back behind the fence offering security.

Current Rates - STDC: \$3987.87 + TRC: \$215.86 = \$4203.73

Steven and Jared

0800 176 4321

stevenandjared@arizto.co.nz



AREINZ Licensed Agent &
Licensed Salesperson (REAA 2008)

- ✓ Whanganui
- ✓ Waverley
- ✓ Patea
- ✓ Hawera

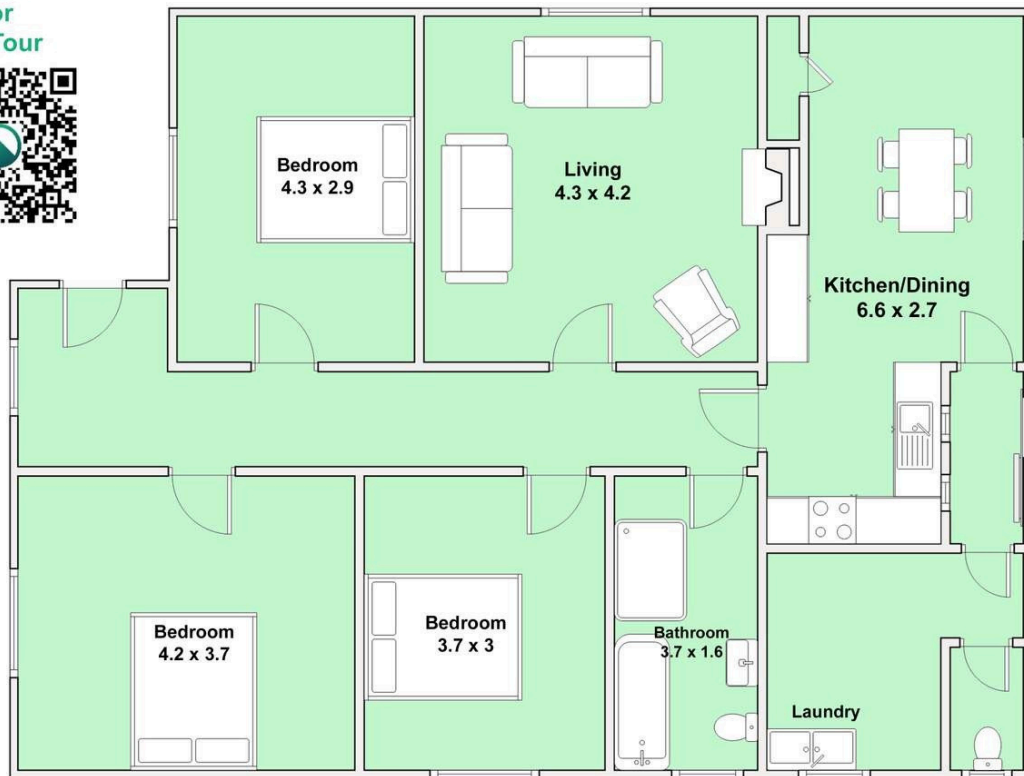


Sell for 2% + GST, Marketing Covered

arizto.co.nz

Licensed REAA 2008

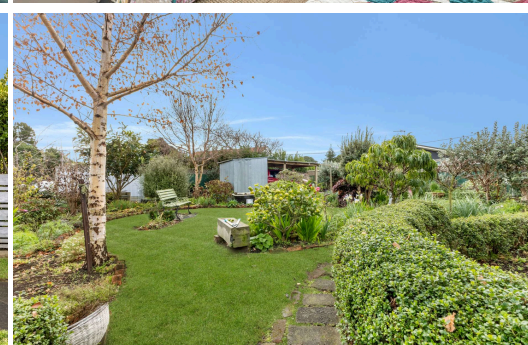
Scan here
for
3D Tour



Marketing Floor Plan - 56 Waihi Road, Hāwera

DISCLAIMER: Plans shown are for presentation purposes only and are not part of any Council documents, legal documents or Record of Title. They are subject to errors, omissions, inaccuracies and should not be used as a sole and accurate reference.

Interested parties should make their own inquiries using independent sources. Marketing Floor Plan measurements are considered 'more or less' and measured in metres.



Lisa Tangaroa

020 4131 0277

lisa.t@arizto.co.nz



- ✓ Patea
- ✓ Hawera
- ✓ Normanby
- ✓ Manaia

Licensed Salesperson (REAA 2008)