

27 Kitchener Street, Whanganui

 4
  2
  1

Floor/Land Size

Floor: 134m2 (+/-)

Land: 589m2 (+/-)

Buyers \$438,000+

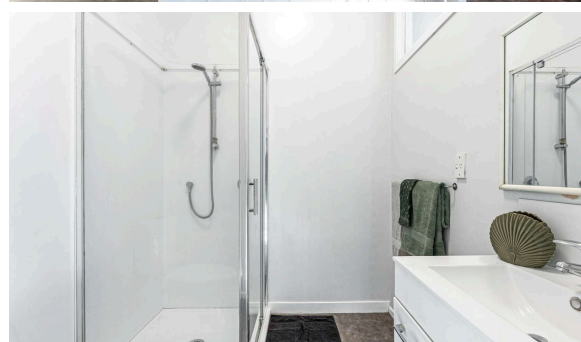
Refreshed, roomy and ready!

View the 3D Matterport Tour at this link: my.matterport.com/show/?m=wPqk9nscdSR

Refreshed, with more bedroom and bathroom options, and for sale in the range of families or first homeowners, this is the one to come over to Whanganui East and see. The driveway leads to a single plus garage with roller door, with a roomy section including lemon trees and clothesline. There is also wheelchair ramp access to both the front and side entry doors. The front three bedrooms, connected by the hallway - while the master has privacy off the kitchen at the rear with backyard view. The real attraction for family living is the bathrooms layout - high ceiling shower room with shower dome and toilet, and a separate wet floor bathroom with another toilet and combined laundry. The open plan living and dining area is expansive with a serving bench, wall oven, bench elements with extractor fan, dishwasher, main sink with rinsing sink, large fridge alcove and plenty of cupboard space. A Heat Pump and Gas Infinity complete the ensemble.

Whanganui District Council records and associated property documents can be downloaded at this link: www.arizto.co.nz/property-search/27-kitchener-street-whanganui-east

Current Rates - WDC: \$3327.72 + HORIZONS: \$359.03 = \$3686.75



Steven and Jared

 0800 176 4321

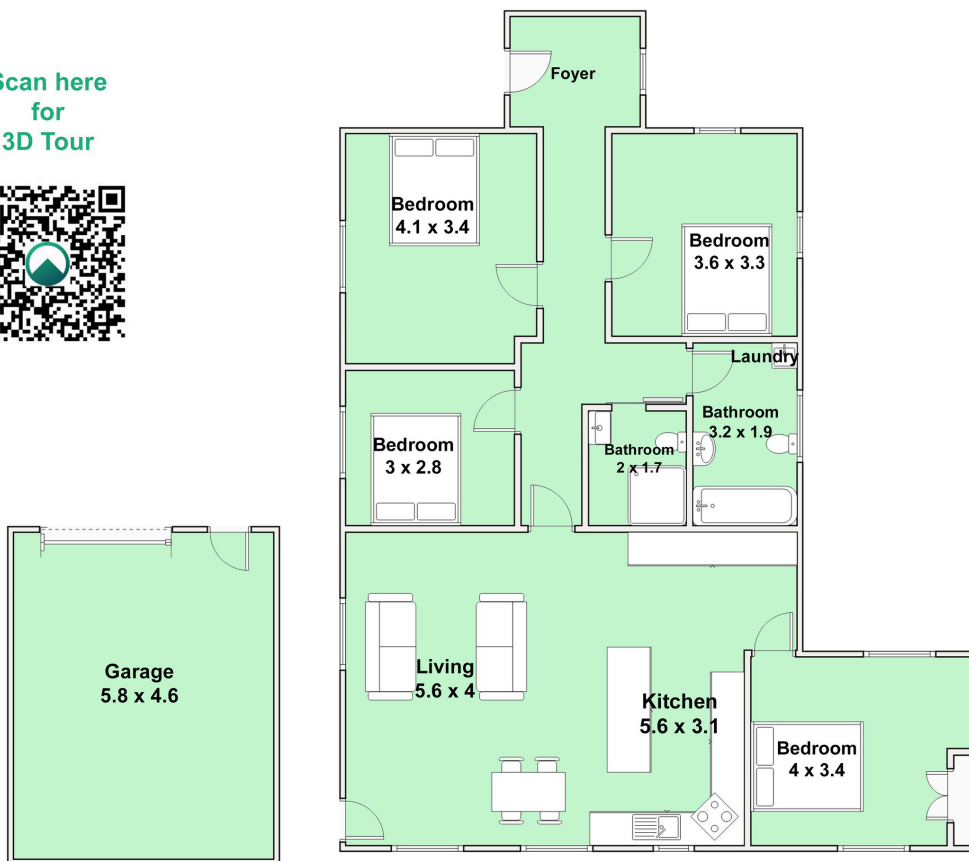
 stevenandjared@arizto.co.nz



AREINZ Licensed Agent &
Licensed Salesperson (REAA 2008)

-  Whanganui
-  Marton
-  Waverley
-  Hawera

Scan here
for
3D Tour

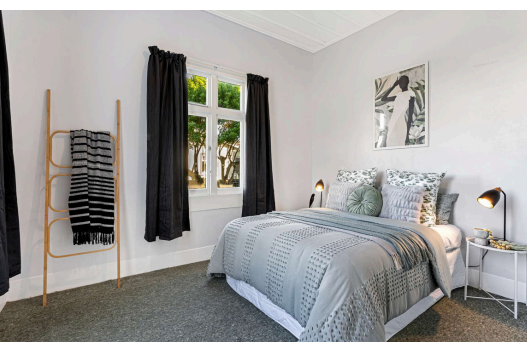
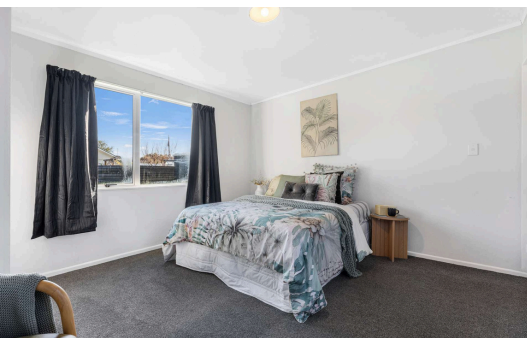


Marketing Floor Plan - 27 Kitchener Street, Whanganui



DISCLAIMER: Plans shown are for presentation purposes only and are not part of any Council documents, legal documents or Record of Title. They are subject to errors, omissions, inaccuracies and should not be used as a sole and accurate reference.

Interested parties should make their own inquiries using independent sources. Marketing Floor Plan measurements are considered 'more or less' and measured in metres.



Steven and Jared

0800 176 4321

stevenandjared@arizto.co.nz



- ✓ Whanganui
- ✓ Marton
- ✓ Waverley
- ✓ Hawera

AREINZ Licensed Agent &
Licensed Salesperson (REAA 2008)